

# Transition Time

## What does it mean to transition?

Right around the time our Early Head Start children turn 2.5 we talk with their parents about what it means to transition. Transition simply means that your child's enrollment transitions, or moves, from the Early Head Start (EHS) Program into the Preschool Head Start (PHS) Program. This process **does not** happen automatically. It requires a little effort on your part but has great potential benefits!

## What are the options?

### PHS CENTER-BASED

Classroom with Teacher & Assistant:

- ▶ Approximately 16 children per classroom
- ▶ 4 hour class time, Monday - Thursday
- ▶ 9 months of the year (September - May)
- ▶ 1 snack, 1 meal served family style
- ▶ Works with parents to set goals for the child
- ▶ No buses available-parents are responsible for transportation
- ▶ AM & PM options available depending on location
- ▶ Extended Day (6 hrs.) are available depending on location
  - ▶ Monday - Friday
  - ▶ 9.5 months of the year (Mid August - May)
  - ▶ 1 snack, 2 meals provided
  - ▶ quiet time

Centers:

- ▶ AM CLASSES
  - ▶ Logan (5 classes)
  - ▶ Hyrum
  - ▶ Preston
  - ▶ Malad
- ▶ PM CLASSES
  - ▶ Logan (4 classes)
  - ▶ Hyrum
  - ▶ Preston
  - ▶ Paris
- ▶ EXTENDED DAY
  - ▶ Brigham 1&2
  - ▶ Fielding
  - ▶ Smithfield
  - ▶ Richmond

### PHS HOME-BASED

Family Educator:

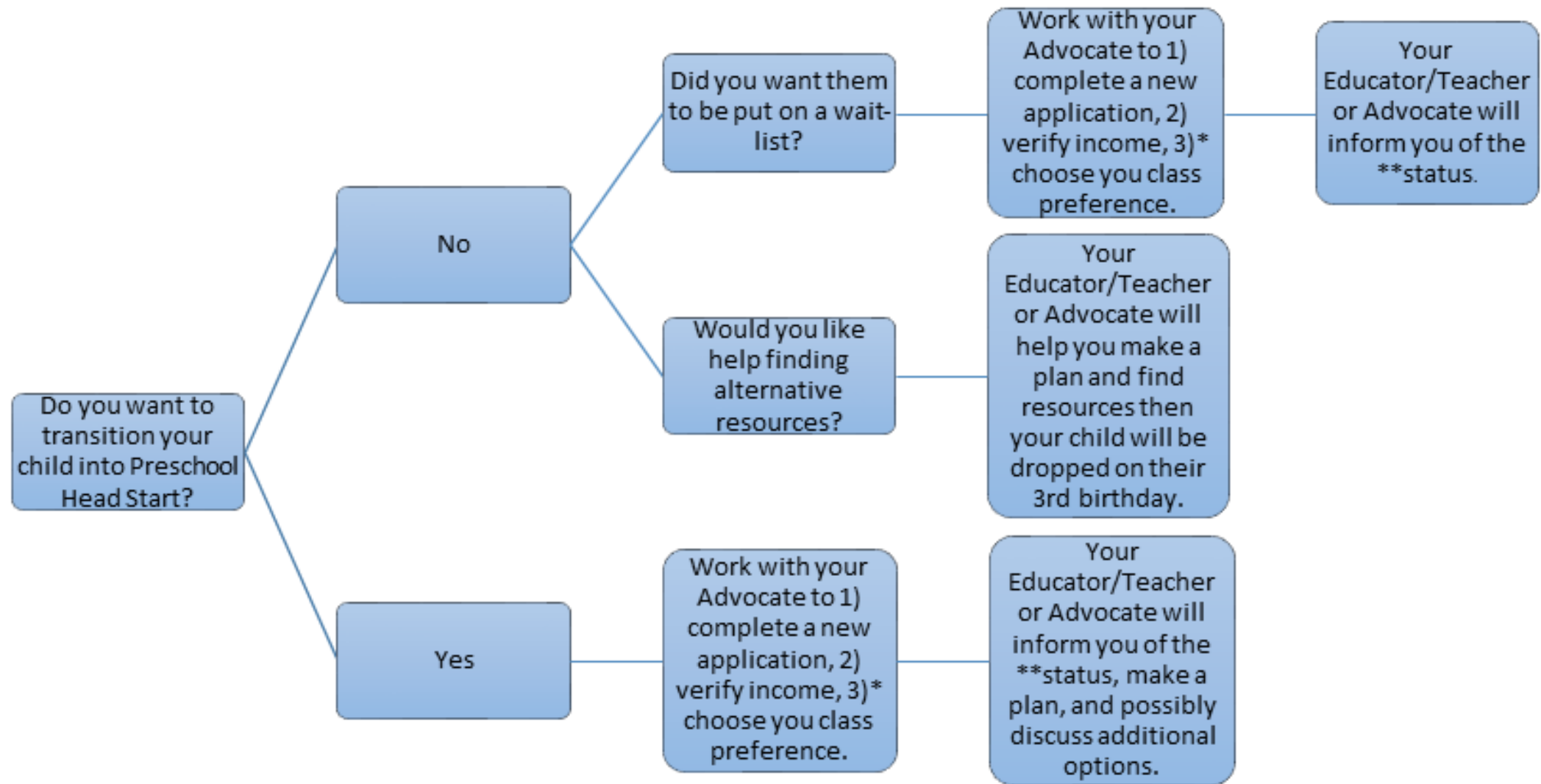
- ▶ In the home weekly for 90 minute visits
- ▶ 9 months of the year (September - May)
- ▶ Works with parents to set goals for the child
- ▶ Guides parents in ways they can help their child

Family Advocate:

- ▶ In home, monthly visits
- ▶ Gives support to the entire family in working towards goals
- ▶ Provides information about community resources
- ▶ Works with family to complete medical and dental requirements if they have not been completed by the beginning of the school year

Family Advocate:

- ▶ In home, monthly visits
- ▶ Gives support to the entire family in working towards goals
- ▶ Provides information about community resources
- ▶ Works with family to complete medical and dental requirements if they have not been completed by the beginning of the school year



### *\*What does it mean to transition early?*

You can choose to have your child transition early (as soon as they turn 3) instead of having them wait until the next fall. This option is based on openings in the class you want and other children on the wait-list. Make careful consideration of your child's development and temperament potentially being in a classroom with some 5 year olds.

### *\*\*Note*

If your family does not qualify, a committee will look at all of the factors affecting you and your child to decide if your child will be transitioned. There are only a small number of spots that can be used for over-income children and are saved for those with the highest need. If the committee determines your child will not transition, the child will be dropped from the program on their 3rd birthday. They will be placed on a wait-list for opportunities to be enrolled. Your advocate and educator/teacher will talk with you about other preschool options in the community.