

**Bear River Head Start/Early Head Start
Homebased School Readiness Report and Outcomes
2013-2014**

School readiness outcomes are tracked on each child three times per year in the Fall, Winter and Spring. The baseline for each child is the Fall data. In between reporting dates, Family Educators and parents identify which skills are "next steps" for the child, and set school readiness goals and plan home visit activities to support those goals. In this way, the curricula is individualized for each child according to his or her developmental needs and interests.

Data is tabulated and the results can be viewed by individual child or by groups. Group categories include age, gender, class, and dual/non dual language learners. Areas of low or stagnant progress are addressed in several ways. Trainings are provided to family educators that focus on domains needing improvement; sometimes knowledge can be sparse in certain areas or the educator is lacking ideas in how to support growth. From a wider perspective, if an outcome domain is low by class, then socialization groups can be used to help the parents understand ways to support the progress of their child, and ideas are incorporated into socialization activities.

One discovery for the Early Head Start Outcomes was that there was stagnant growth shown in the Approaches to Learning domain over the year. This was not because children were not developing in these skills, but because the assessment had only a few zero to three indicators to assess. Many skills in the Approaches to Learning domain (attention, curiosity, memory, persistence, and self regulation) are often found under other domains. In the future, we will assess children on these skills under multiple domains and then aggregate

them into the existing Approaches to Learning skills, so that a clearer picture will be seen as to their growth in this area.

Positive outcomes for children in the homebased option are based on the Family Educator/Parent partnership, and parent follow-through on home visit activities. Parent participation is crucial for the child to have ample opportunity to practice new skills throughout the week with focused interaction.

Head Start Early Childhood Learning Domains for Preschool children:

Social/Emotional Development (relationships, self-concept, self regulation, emotional & behavioral health)
Physical Development & Health (health status, health knowledge and practice, gross motor skills, and fine motor skills)
Language (receptive and expressive)
Approaches to Learning (initiative, curiosity, persistence, attentiveness, cooperation)
Literacy (book appreciation and knowledge, phonological awareness, alphabet knowledge, print concepts, early writing)
Math & Logic (number concepts, quantities, patterns, measurements & comparisons)
Science (skills and methods, conceptual knowledge of natural and physical world)
Social Studies (self, family, community, people and the environment, history and events)
Creative Arts (music, movement & dance, art, drama)
English Language Development (receptive and expressive English language skills, engagement in English literacy activities)

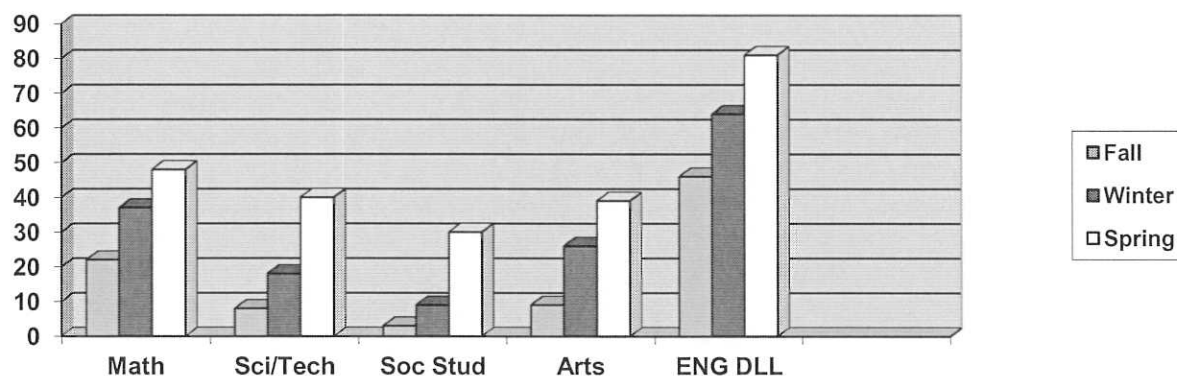
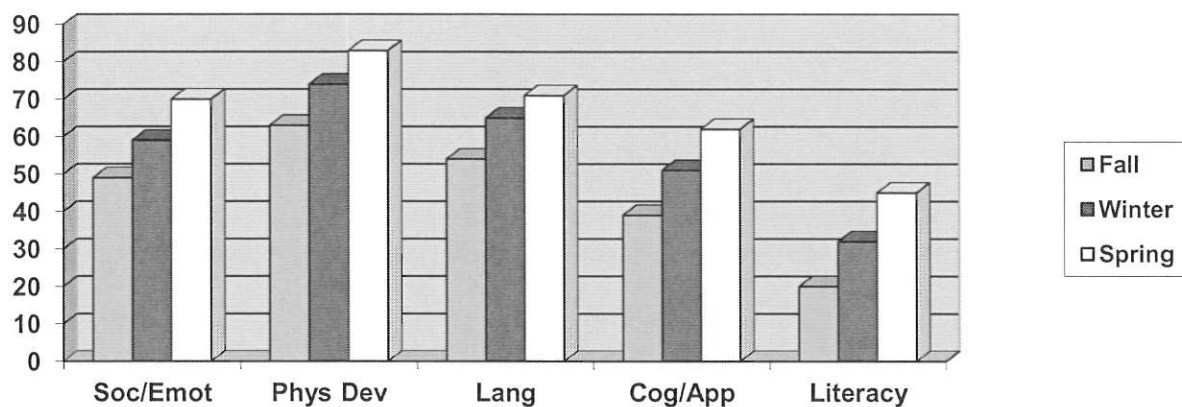
School Readiness for Early Head Start children is based on providing a secure foundation for positive parent/child relationships (attachment) and a safe place for children to practice early learning skills that will help them be ready to enter preschool ready to succeed and learn.

Early Head Start Infant/Toddler Five Essential Domains:

Social/Emotional (relationships, self regulation
Physical Development (traveling skills, balancing, gross motor, fine motor)
Language & Literacy (listening, understanding, expressive vocabulary)
Cognitive (attends, engages, persists, curiosity, memory)
Approaches to Learning (persists, self regulation, makes connections, solves problems)
Additional Domain: English Language Development (receptive/expressive

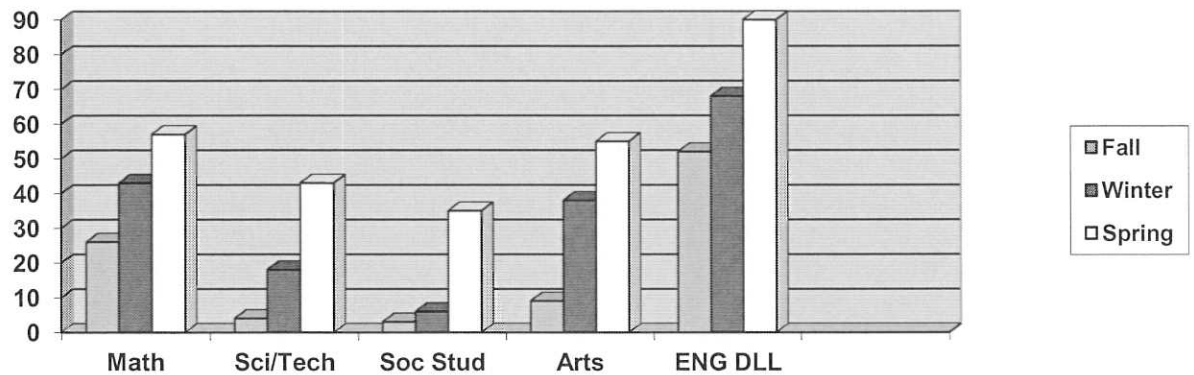
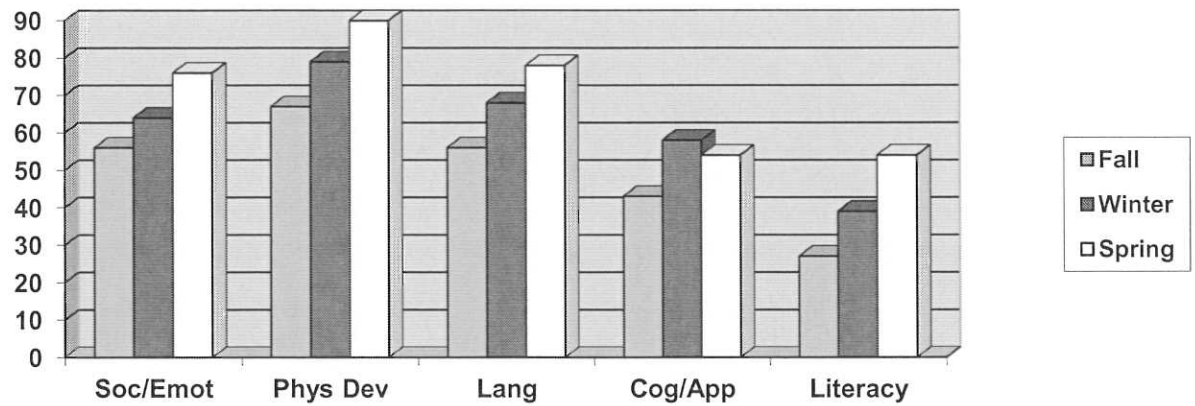
The Preschool Homebased Outcome Charts are presented below, followed by the Early Head Start Outcome Charts:

Bear River Head Start Outcomes Progress 2013-2014 All Homebased Children



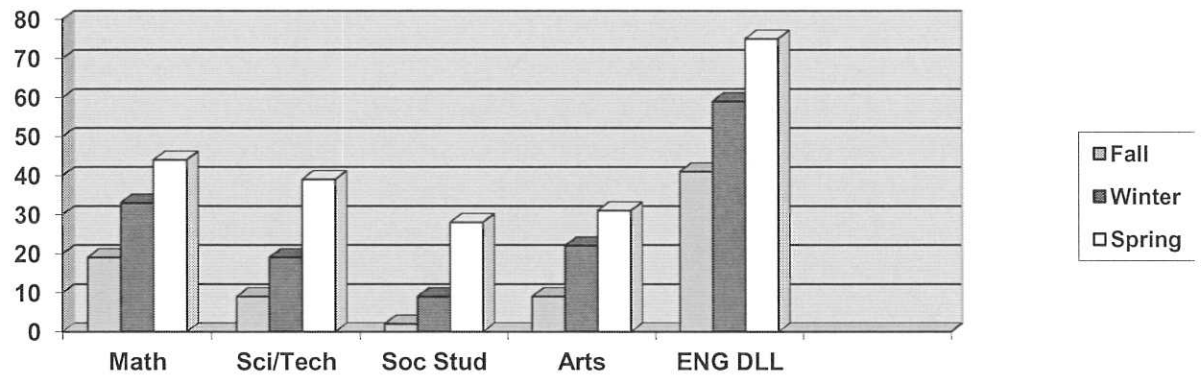
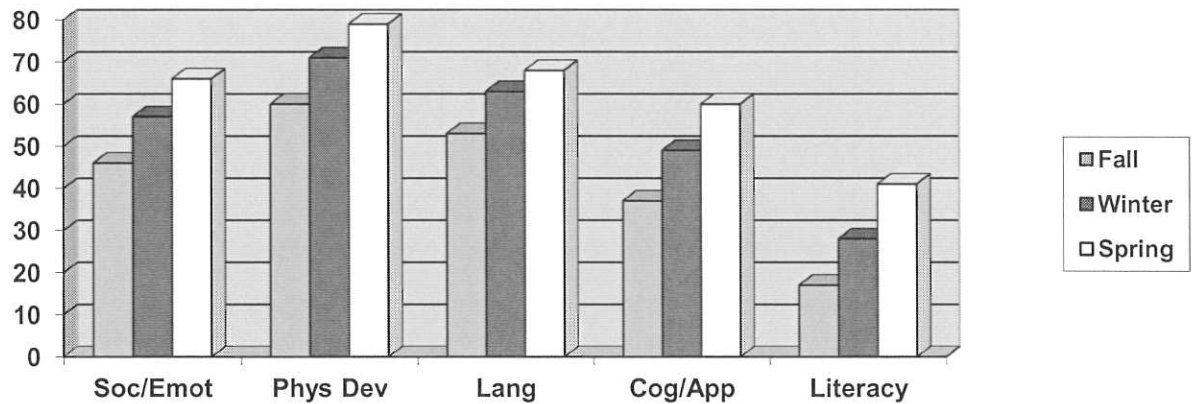
DOMAIN	Fall	Winter	Spring	Total Year % Gain
Social-Emotional	49	59	70	21%
Physical Development	63	74	83	20%
Language	54	65	71	17%
Cognitive/Approaches to Learning	39	51	62	23%
Literacy	20	32	45	25%
Math	22	37	48	26%
Science/Technology	8	18	40	32%
Social Studies	3	9	30	27%
Creative Arts	9	26	39	30%
English Language (DLL)	46	64	81	35%

Bear River Head Start Outcomes Progress 2013-2014 Homebased 4 year olds



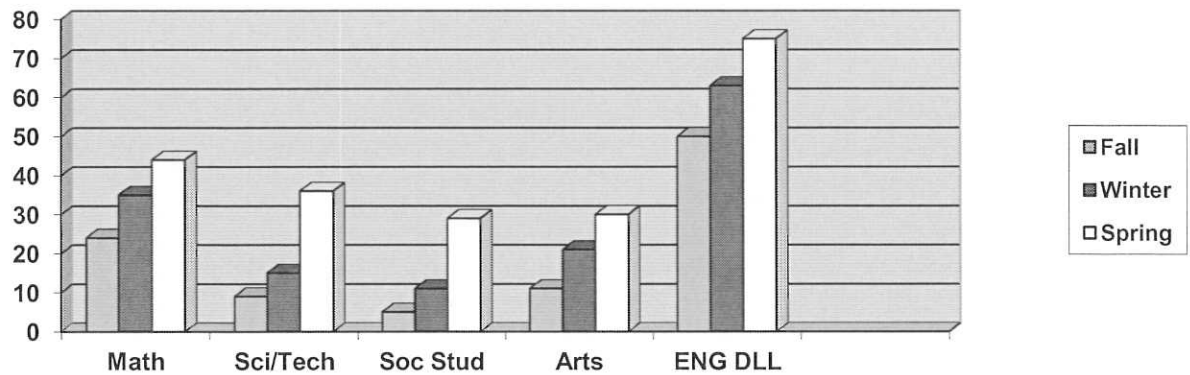
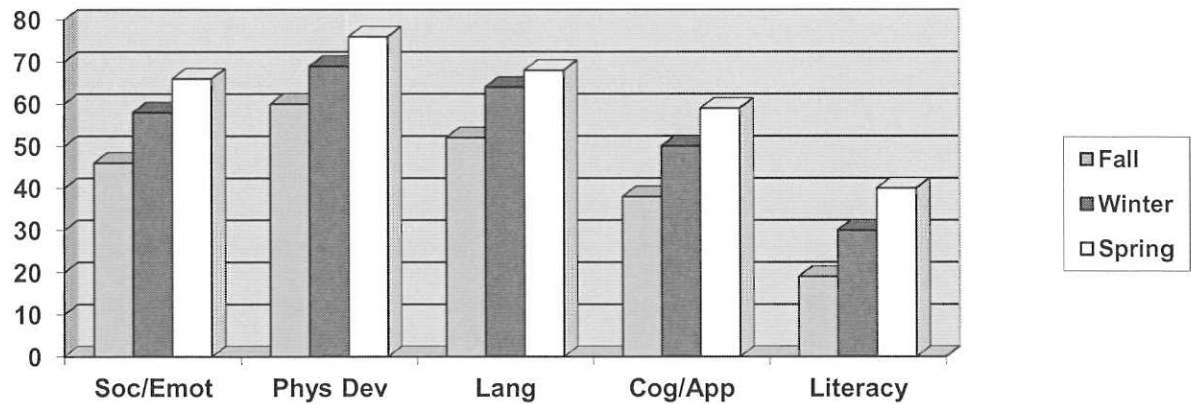
DOMAIN	Fall	Winter	Spring	Total Year % Gain
Social-Emotional	56	64	76	20%
Physical Development	67	79	90	23%
Language	56	68	78	22%
Cognitive/Approaches to Learning	43	58	54	11%
Literacy	27	39	54	27%
Math	26	43	57	31%
Science/Technology	4	18	43	39%
Social Studies	3	6	35	32%
Creative Arts	9	38	55	46%
English Language (DLL)	52	68	90	38%

Bear River Head Start Outcomes Progress 2013-2014 Homebased 3 year olds



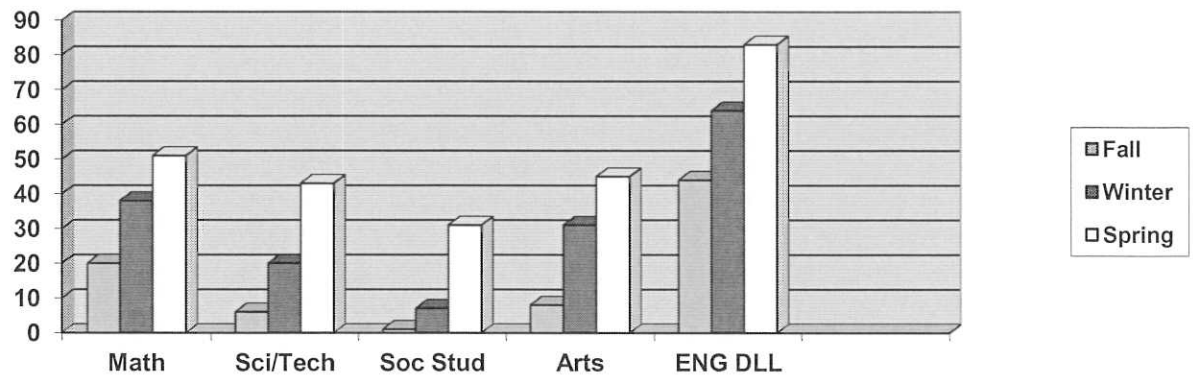
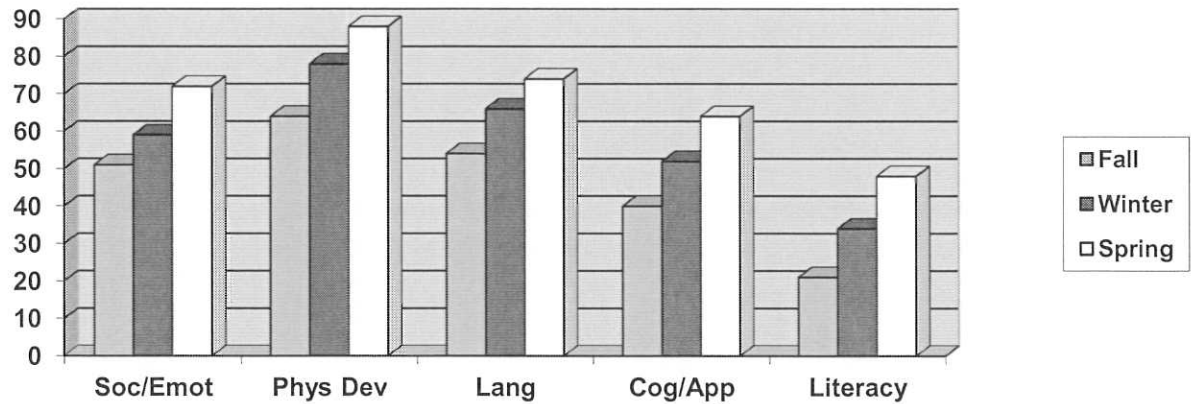
DOMAIN	Fall	Winter	Spring	Total Year % Gain
Social-Emotional	46	57	66	20%
Physical Development	60	71	79	19%
Language	53	63	68	15%
Cognitive/Approaches to Learning	37	49	60	23%
Literacy	17	28	41	24%
Math	19	33	44	25%
Science/Technology	9	19	39	30%
Social Studies	2	9	28	26%
Creative Arts	9	22	31	22%
English Language (DLL)	41	59	75	34%

Bear River Head Start Outcomes Progress 2013-2014 Homebased Boys



DOMAIN	Fall	Winter	Spring	Total Year % Gain
Social-Emotional	46	58	66	20%
Physical Development	60	69	76	16%
Language	52	64	68	16%
Cognitive/Approaches to Learning	38	50	59	21%
Literacy	19	30	40	21%
Math	24	35	44	20%
Science/Technology	9	15	36	25%
Social Studies	5	11	29	24%
Creative Arts	11	21	30	19%
English Language (DLL)	50	63	75	25%

Bear River Head Start Outcomes Progress 2013-2014 Homebased Girls

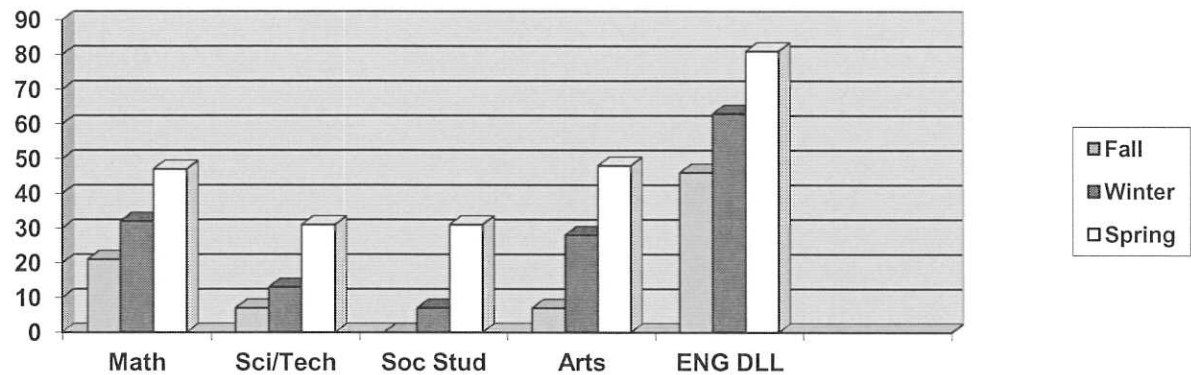
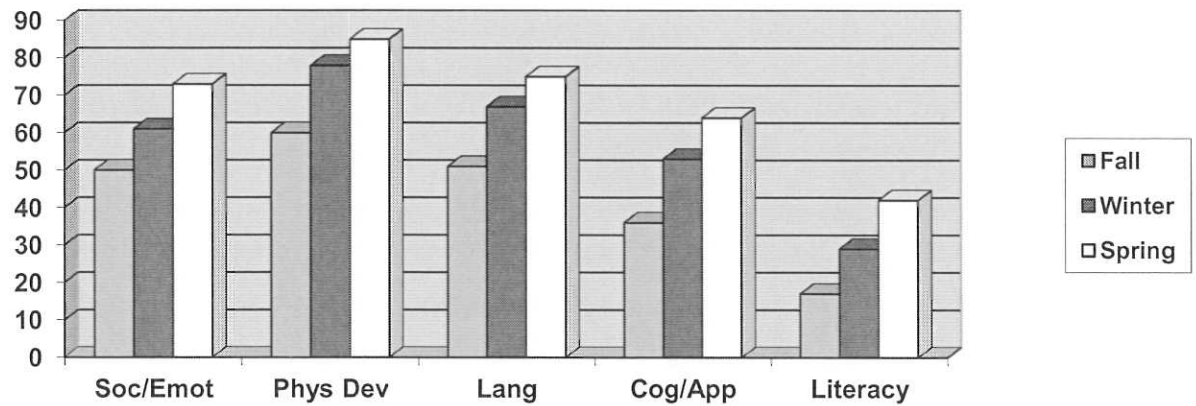


DOMAIN	Fall	Winter	Spring	Total Year % Gain
Social-Emotional	51	59	72	21%
Physical Development	64	78	88	24%
Language	54	66	74	20%
Cognitive/Approaches to Learning	40	52	64	24%
Literacy	21	34	48	27%
Math	20	38	51	31%
Science/Technology	6	20	43	37%
Social Studies	1	7	31	30%
Creative Arts	8	31	45	37%
English Language (DLL)	44	64	83	29%

Bear River Head Start

Outcomes Progress 2013-2014

Homebased Dual Language Learners

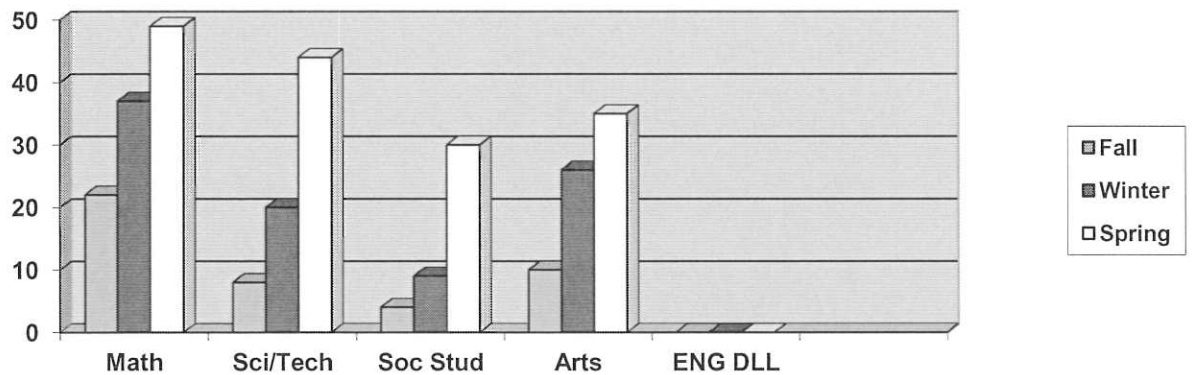
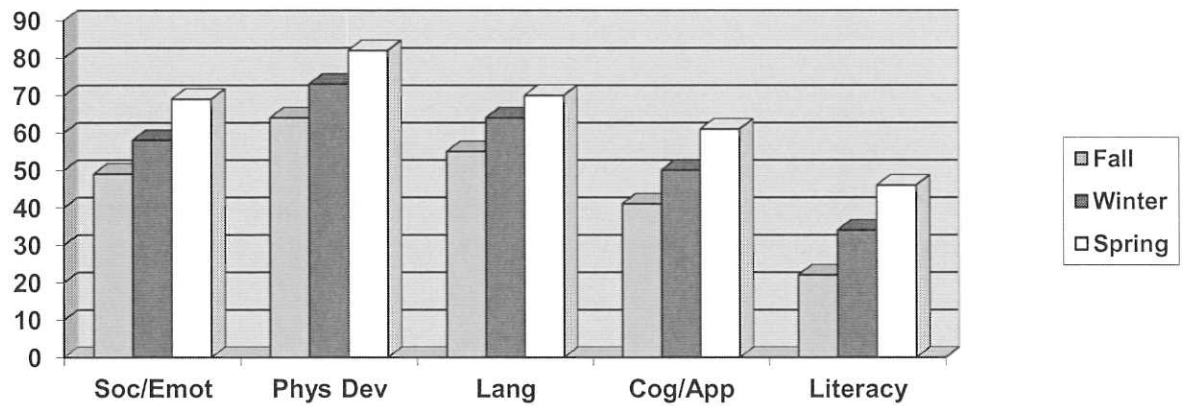


DOMAIN	Fall	Winter	Spring	Total Year % Gain
Social-Emotional	50	61	73	23%
Physical Development	60	78	85	25%
Language	51	67	75	24%
Cognitive/Approaches to Learning	36	53	64	32%
Literacy	17	29	42	25%
Math	21	32	47	26%
Science/Technology	7	13	31	24%
Social Studies	0	7	31	31%
Creative Arts	7	28	48	41%
English Language (DLL)	46	63	81	35%

Bear River Head Start

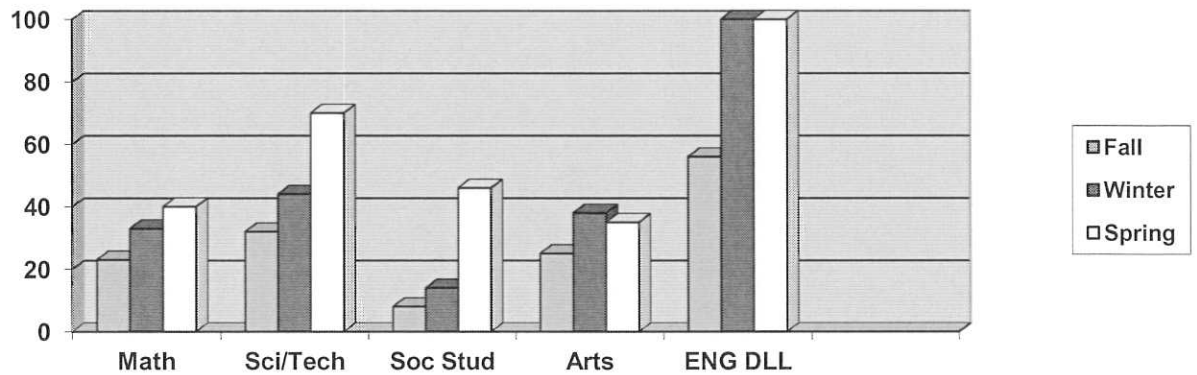
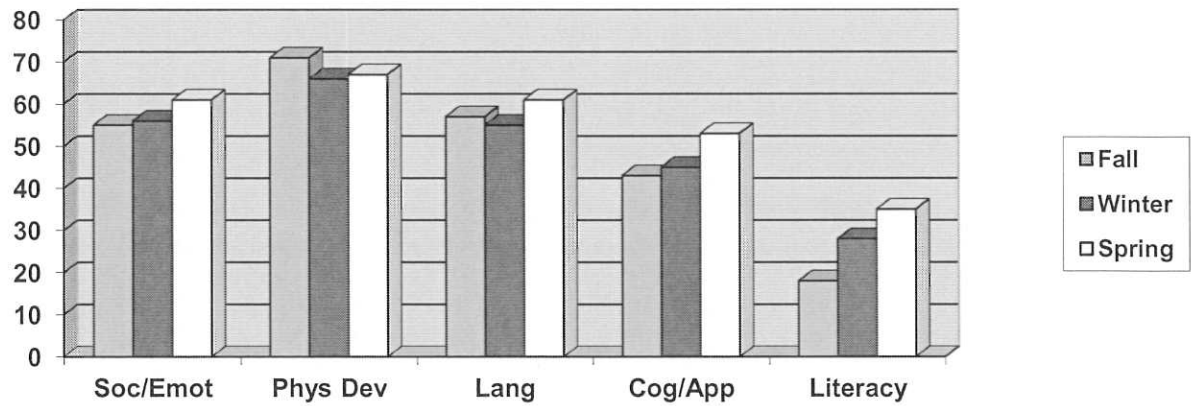
Outcomes Progress 2013-2014

Homebased Non Dual Language Learners



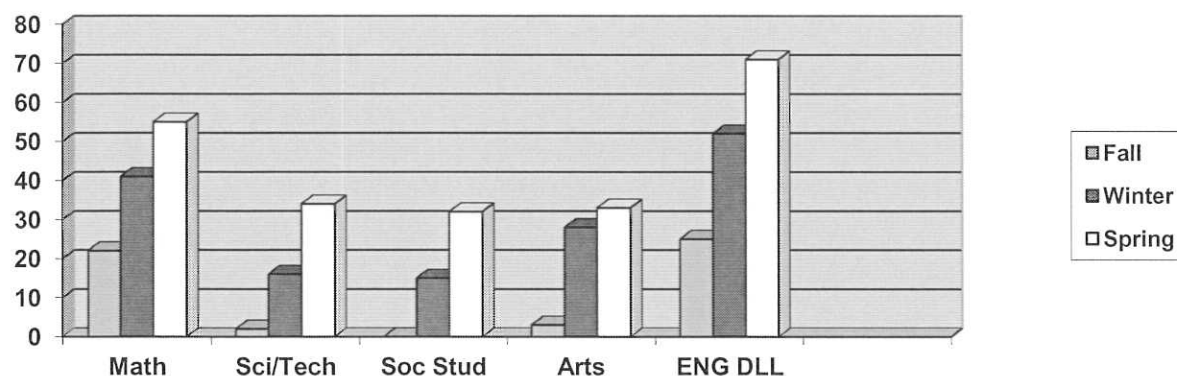
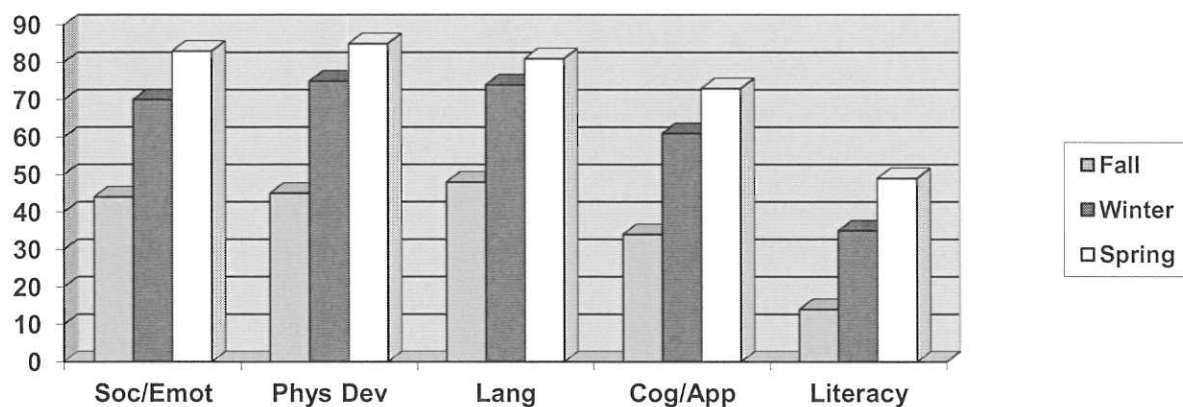
DOMAIN	Fall	Winter	Spring	Total Year % Gain
Social-Emotional	49	58	69	20%
Physical Development	64	73	82	18%
Language	55	64	70	15%
Cognitive/Approaches to Learning	41	50	61	20%
Literacy	22	34	46	24%
Math	22	37	49	27%
Science/Technology	8	20	44	36%
Social Studies	4	9	30	26%
Creative Arts	10	26	35	25%
English Language (DLL)	n/a	n/a	n/a	n/a

Bear River Head Start Outcomes Progress 2013-2014 Homebased Box Elder



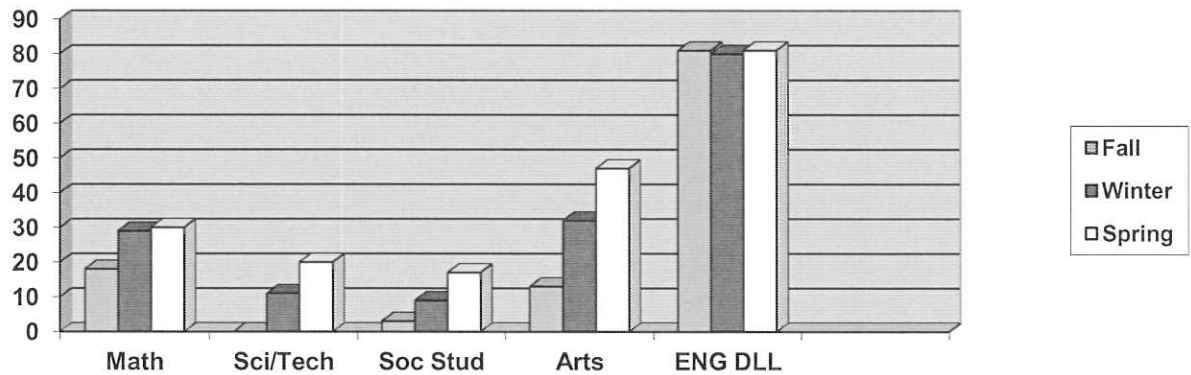
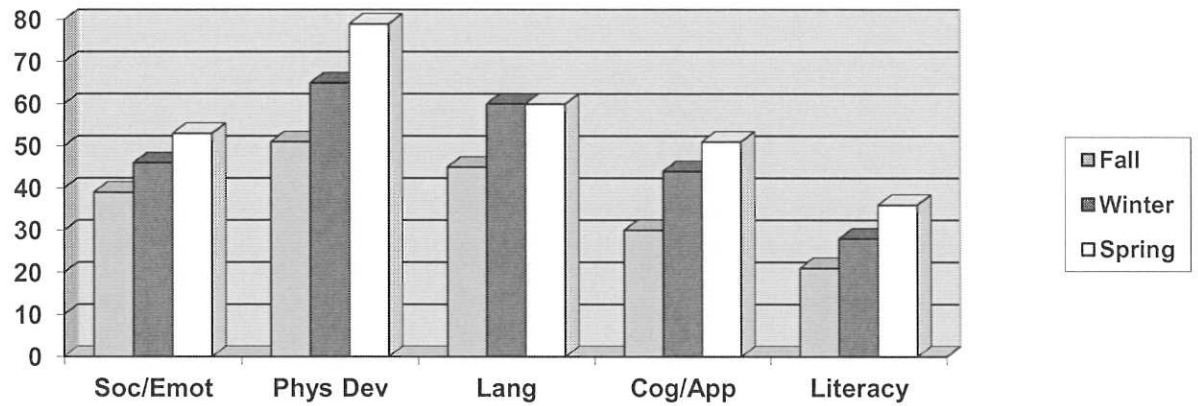
DOMAIN	Fall	Winter	Spring	Total Year % Gain
Social-Emotional	55	56	61	6%
Physical Development	71	66	67	-4%
Language	57	55	61	4%
Cognitive/Approaches to Learning	43	45	53	10%
Literacy	18	28	35	17%
Math	23	33	40	17%
Science/Technology	32	44	70	38%
Social Studies	8	14	46	38%
Creative Arts	25	38	35	10%
English Language (DLL)	56	100	100	44%

Bear River Head Start Outcomes Progress 2013-2014 Homebased Cache



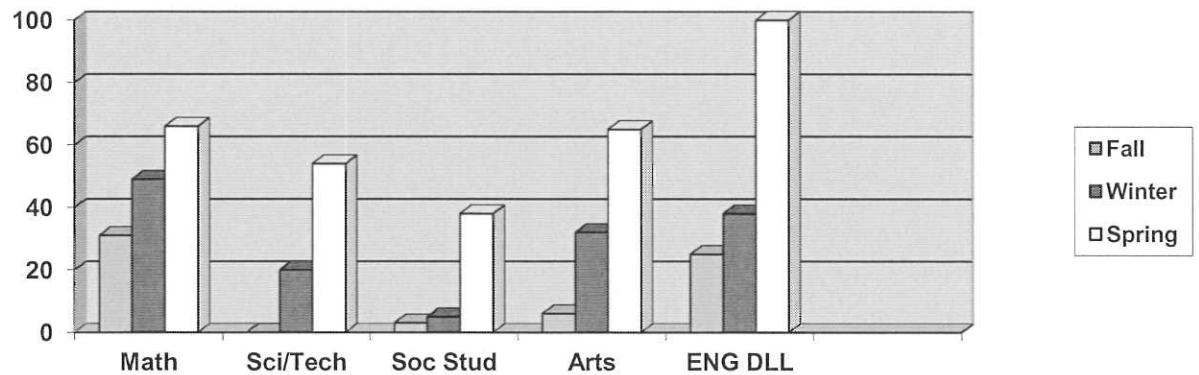
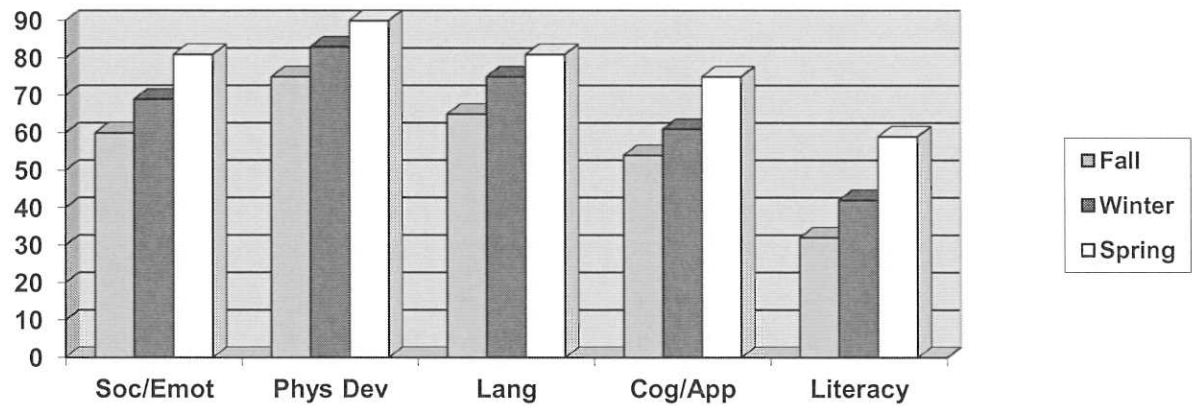
DOMAIN	Fall	Winter	Spring	Total Year % Gain
Social-Emotional	44	70	83	39%
Physical Development	45	75	85	40%
Language	48	74	81	33%
Cognitive/Approaches to Learning	34	61	73	39%
Literacy	14	35	49	39%
Math	22	41	55	33%
Science/Technology	2	16	34	32%
Social Studies	0	15	32	32%
Creative Arts	3	28	33	30%
English Language (DLL)	25	52	71	46%

Bear River Head Start Outcomes Progress 2013-2014 Homebased Franklin



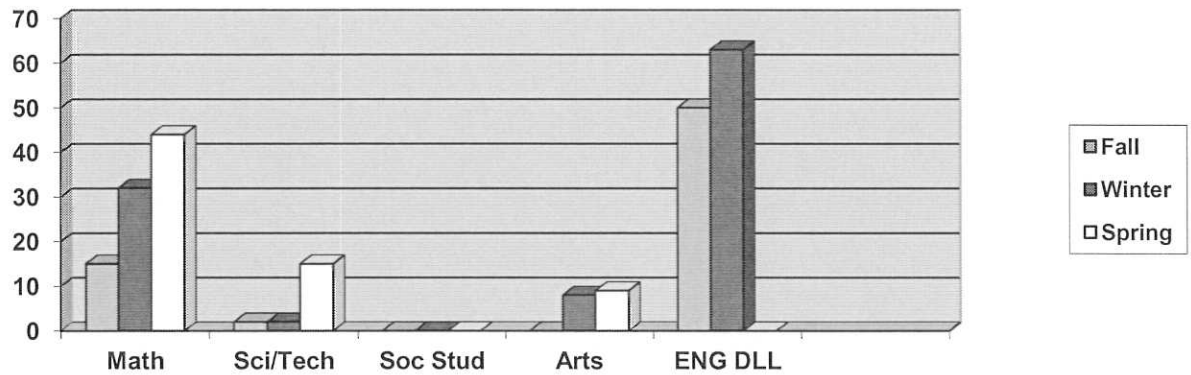
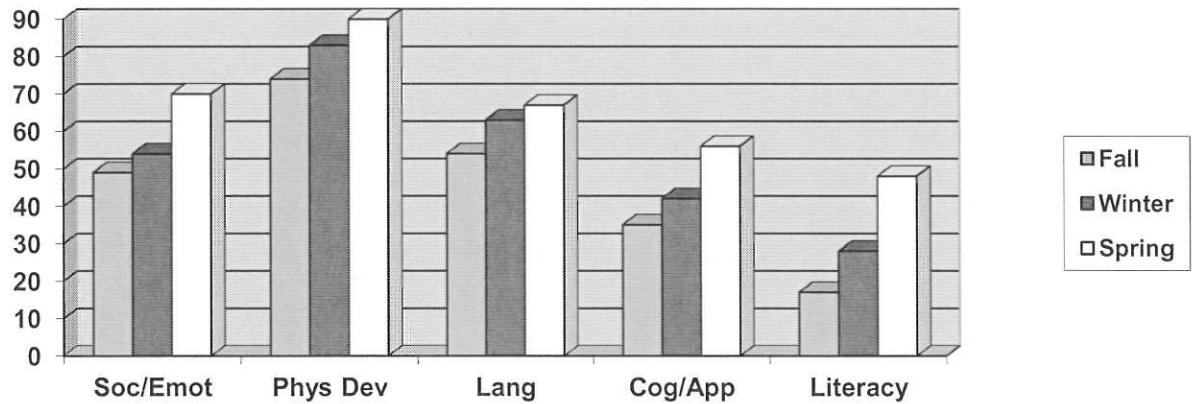
DOMAIN	Fall	Winter	Spring	Total Year % Gain
Social-Emotional	39	46	53	14%
Physical Development	51	65	79	28%
Language	45	60	60	15%
Cognitive/Approaches to Learning	30	44	51	21%
Literacy	21	28	36	15%
Math	18	29	30	12%
Science/Technology	0	11	20	20%
Social Studies	3	9	17	14%
Creative Arts	13	32	47	34%
English Language (DLL)	81	80	81	0%

Bear River Head Start Outcomes Progress 2013-2014 Homebased Rich



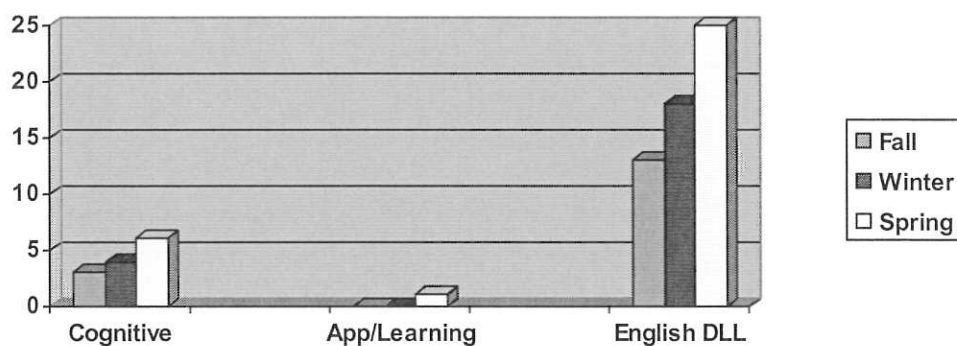
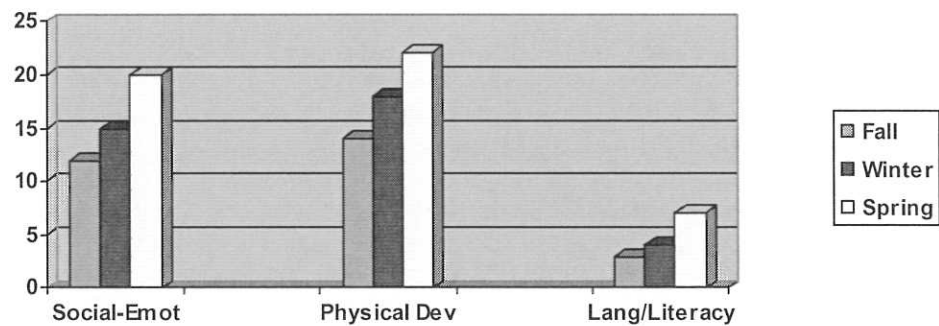
DOMAIN	Fall	Winter	Spring	Total Year % Gain
Social-Emotional	60	69	81	21%
Physical Development	75	83	90	15%
Language	65	75	81	16%
Cognitive/Approaches to Learning	54	61	75	21%
Literacy	32	42	59	27%
Math	31	49	66	35%
Science/Technology	0	20	54	54%
Social Studies	3	5	38	35%
Creative Arts	6	32	65	59%
English Language (DLL)	25	38	100	75%

Bear River Head Start Outcomes Progress 2013-2014 Homebased Snowville



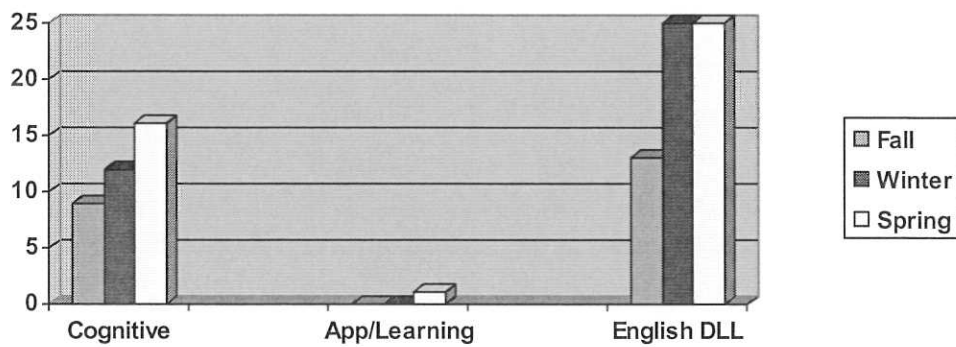
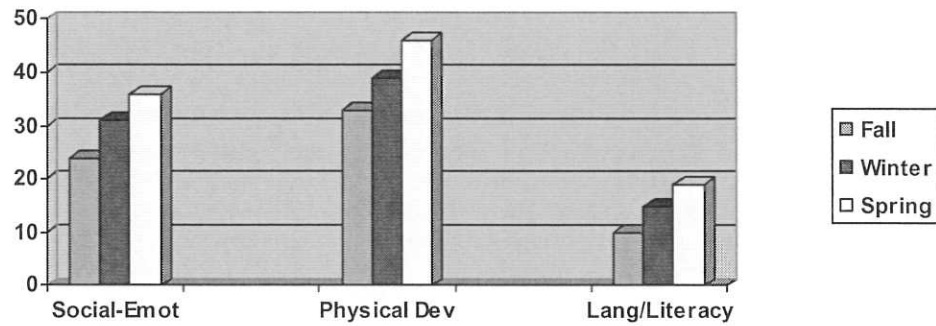
DOMAIN	Fall	Winter	Spring	Total Year % Gain
Social-Emotional	49	54	70	21%
Physical Development	74	83	90	16%
Language	54	63	67	13%
Cognitive/Approaches to Learning	35	42	56	21%
Literacy	17	28	48	31%
Math	15	32	44	29%
Science/Technology	2	2	15	13%
Social Studies	0	0	0	0%
Creative Arts	0	8	9	9%
English Language (DLL)	50	63	n/a	13

Bear River Early Head Start Outcomes Report 2013-2014 Homebased 0-12 Months



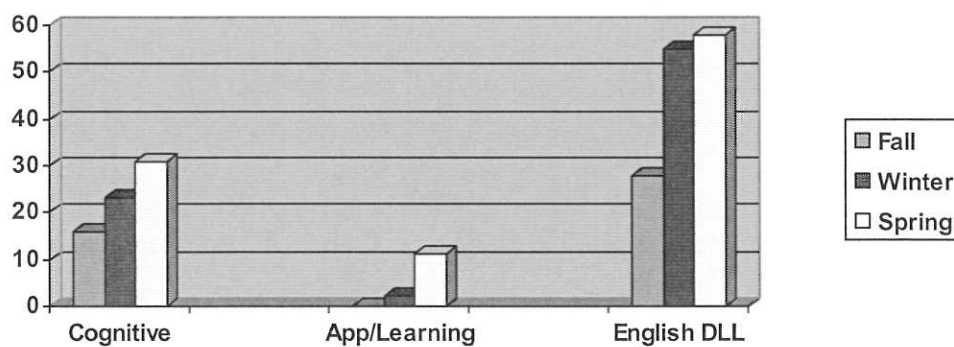
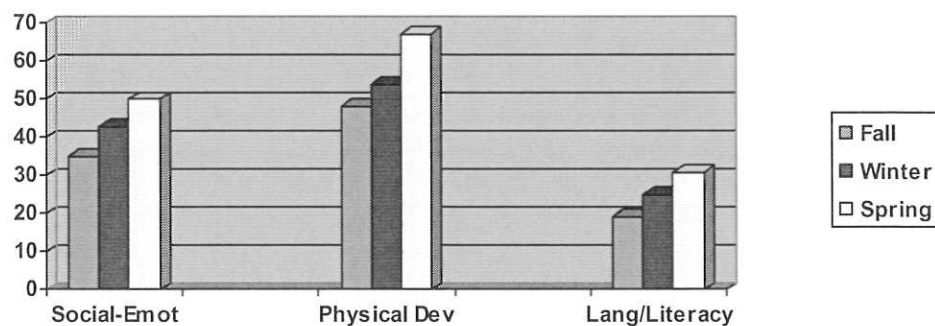
Domain	Fall	Winter	Spring	Gain %
Soc/Emotional	12	15	20	8
Physical Dev.	13	18	22	9
Lang/Literacy	3	4	7	4
Cognitive	3	4	6	3
Approaches to Learning	0	0	1	1
English DLL	13	18	25	12

Bear River Early Head Start Outcomes Report 2013-2014 Homebased 13-24 Months



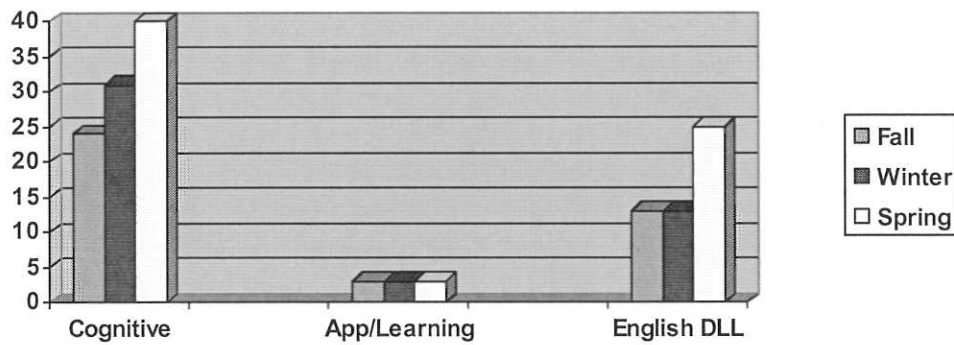
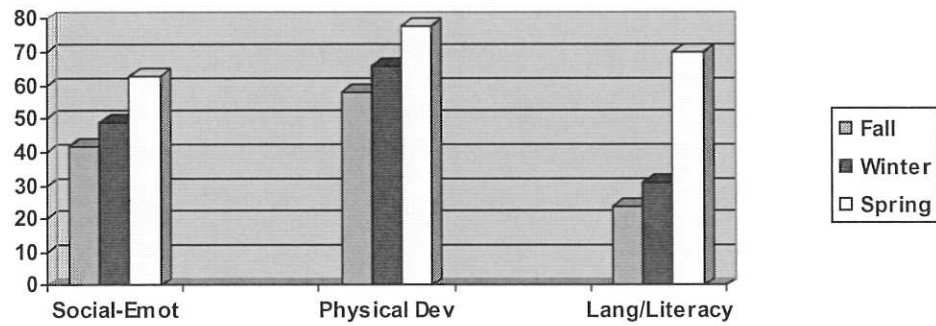
Domain	Fall	Winter	Spring	Gain %
Soc/Emotional	24	31	36	12
Physical Dev.	33	39	46	13
Lang/Literacy	10	15	19	9
Cognitive	9	12	16	7
Approaches to Learning	0	0	1	1
English DLL	13	25	25	12

Bear River Early Head Start Outcomes Report 2013-2014 Homebased 25-35 Months



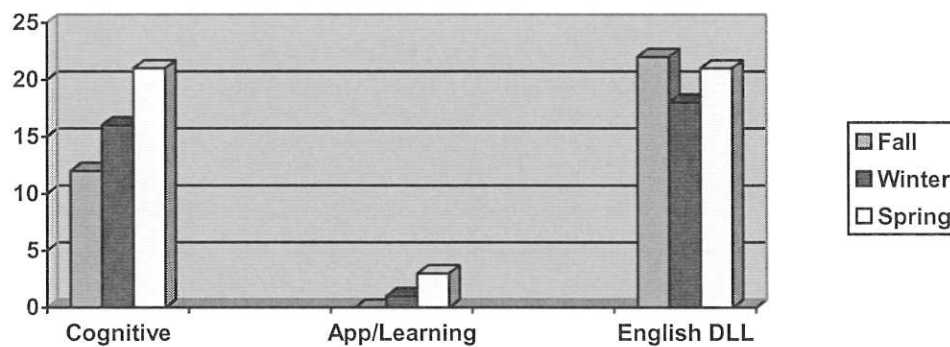
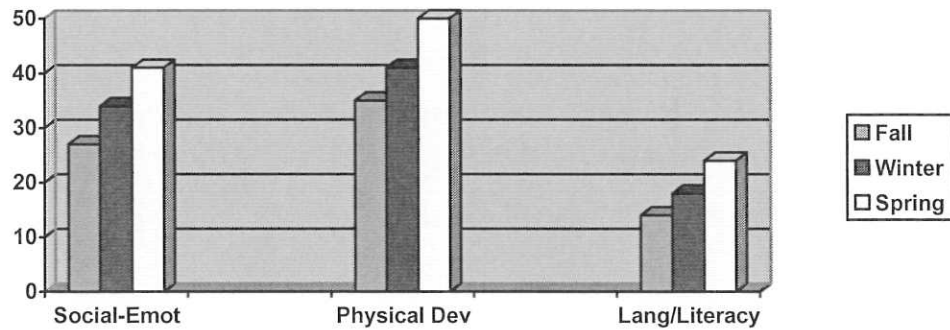
Domain	Fall	Winter	Spring	Gain %
Soc/Emotional	35	43	50	15
Physical Dev.	48	54	67	19
Lang/Literacy	19	25	31	12
Cognitive	16	23	31	15
Approaches to Learning	0	2	11	11
English DLL	28	55	58	30

Bear River Early Head Start Outcomes Report 2013-2014 Homebased 36+ Months



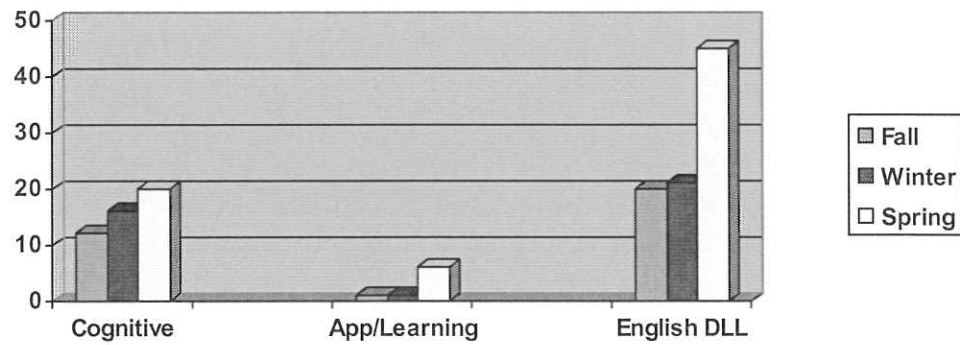
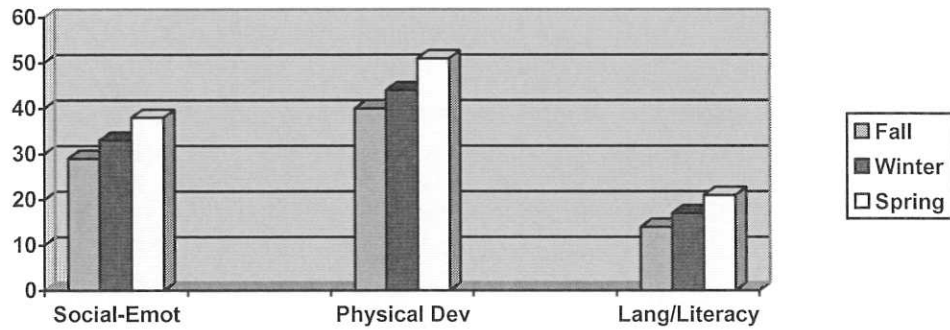
Domain	Fall	Winter	Spring	Gain %
Soc/Emotional	42	49	63	21
Physical Dev.	58	66	78	20
Lang/Literacy	24	31	70	46
Cognitive	24	31	40	16
Approaches to Learning	3	3	3	0
English DLL	13	13	25	12

Bear River Early Head Start Outcomes Report 2013-2014 Homebased Girls



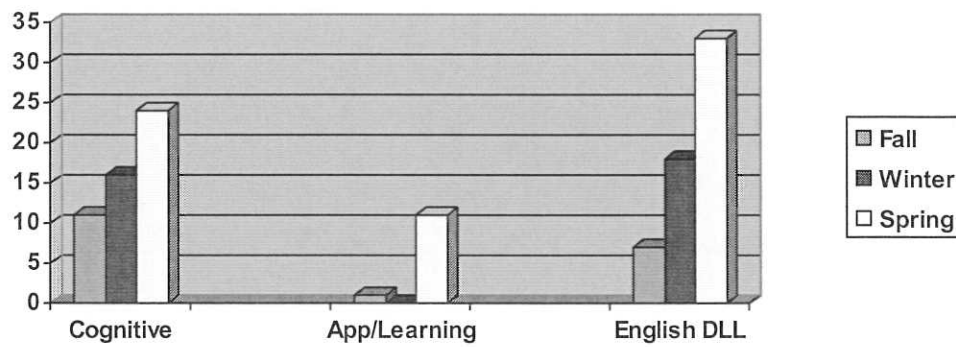
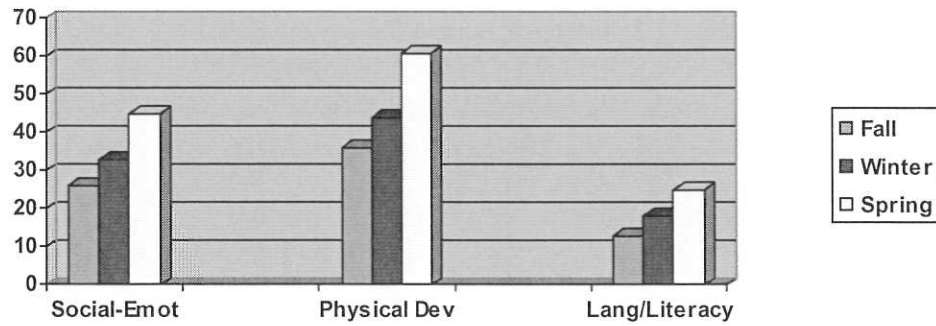
Domain	Fall	Winter	Spring	Gain %
Soc/Emotional	27	34	41	14
Physical Dev.	35	41	50	15
Lang/Literacy	14	18	24	10
Cognitive	12	16	21	9
Approaches to Learning	0	1	3	3
English DLL	22	18	21	-1

Bear River Early Head Start Outcomes Report 2013-2014 Homebased Boys



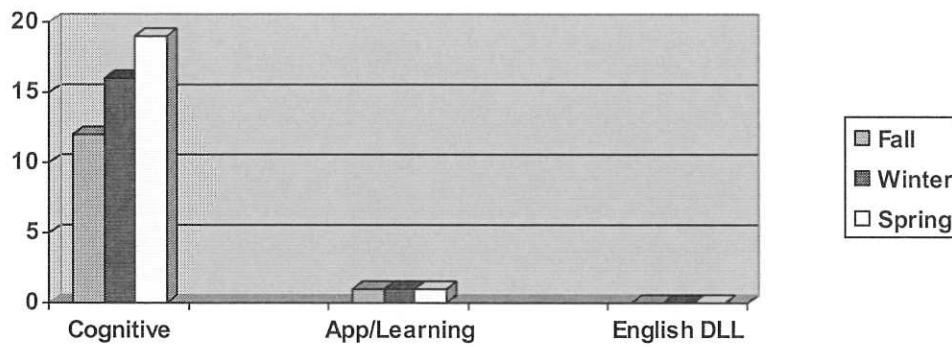
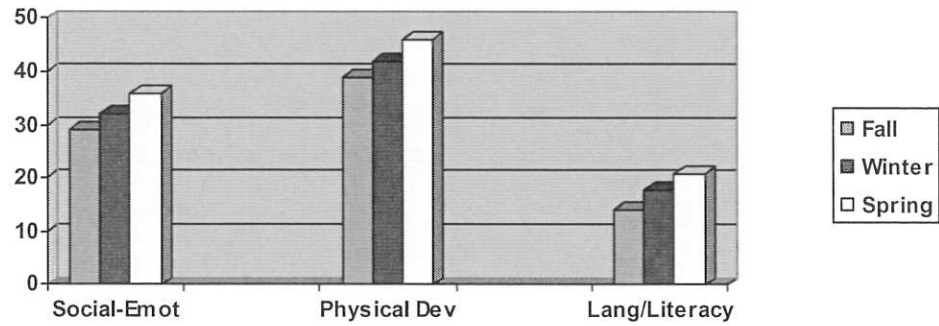
Domain	Fall	Winter	Spring	Gain %
Soc/Emotional	29	33	38	9
Physical Dev.	40	44	51	11
Lang/Literacy	14	17	21	7
Cognitive	12	16	20	8
Approaches to Learning	1	1	6	5
English DLL	20	21	45	25

Bear River Early Head Start Outcomes Report 2013-2014 Homebased – Dual Language Learners



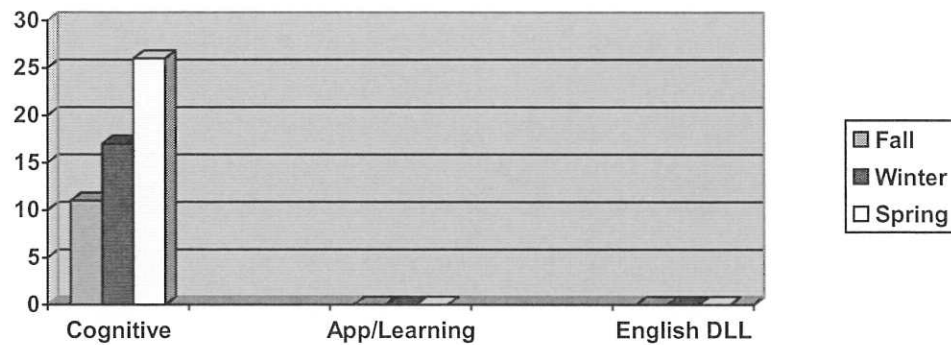
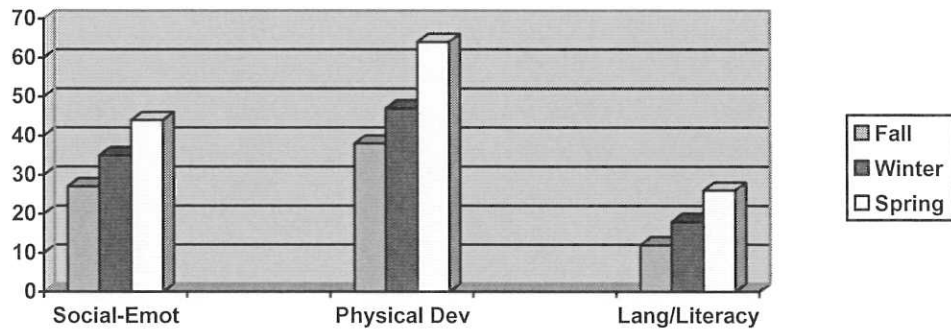
Domain	Fall	Winter	Spring	Gain %
Soc/Emotional	26	33	45	19
Physical Dev.	36	44	61	25
Lang/Literacy	13	18	25	12
Cognitive	11	16	24	13
Approaches to Learning	1	0	11	10
English DLL	7	18	33	26

Bear River Early Head Start Outcomes Report 2013-2014 Homebased – Non Dual Language Learners



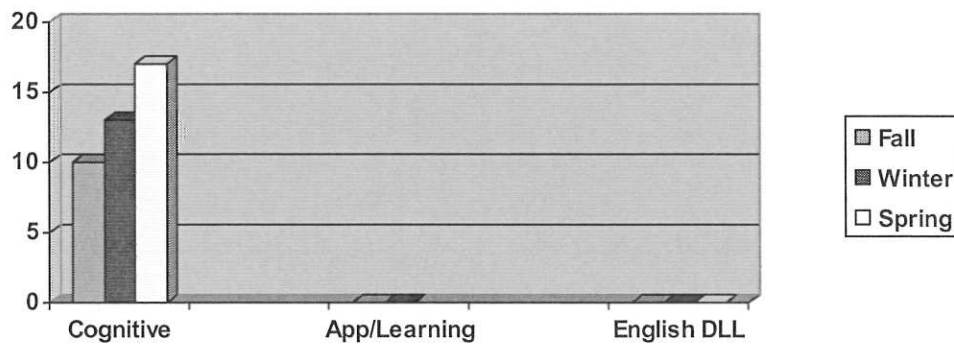
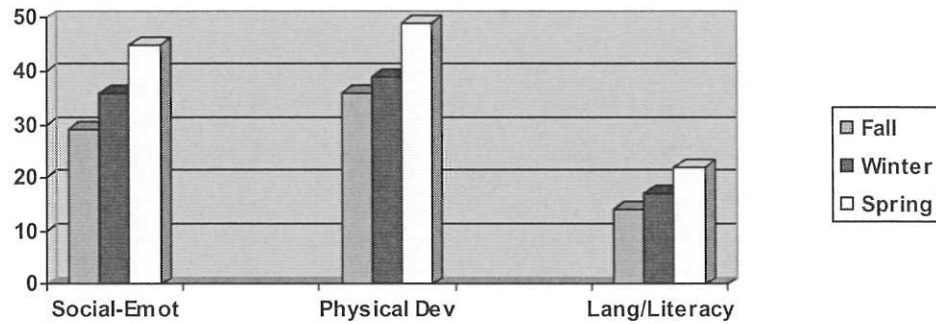
Domain	Fall	Winter	Spring	Gain %
Soc/Emotional	29	32	36	7
Physical Dev.	39	42	46	7
Lang/Literacy	14	18	21	7
Cognitive	12	16	19	7
Approaches to Learning	1	1	1	0
English DLL	n/a	n/a	n/a	n/a

Bear River Early Head Start Outcomes Report 2013-2014 Homebased Class: Box Elder



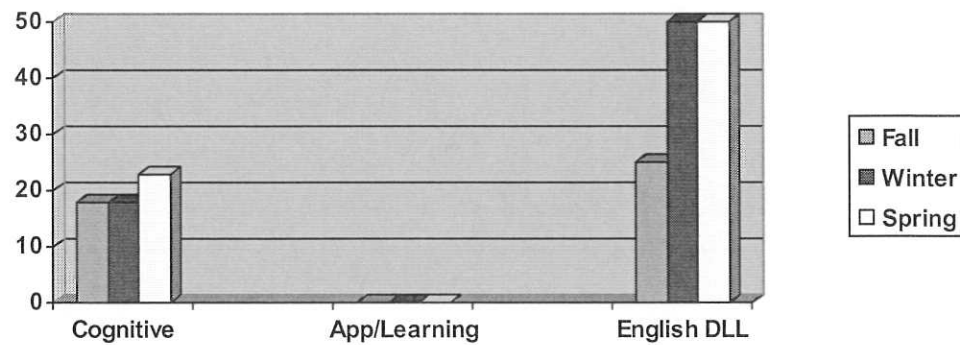
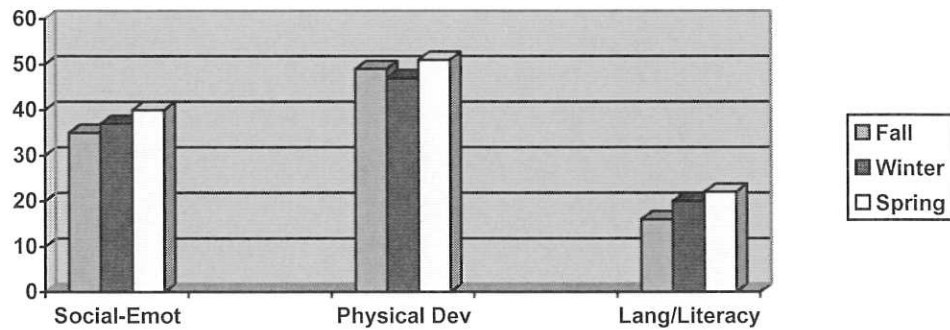
Domain	Fall	Winter	Spring	Gain %
Soc/Emotional	27	35	44	17
Physical Dev.	38	47	54	16
Lang/Literacy	12	18	26	14
Cognitive	11	17	26	15
Approaches to Learning	0	0	0	0
English DLL	n/a	n/a	n/a	n/a

Bear River Early Head Start Outcomes Report 2013-2014 Homebased Class: Cache 1



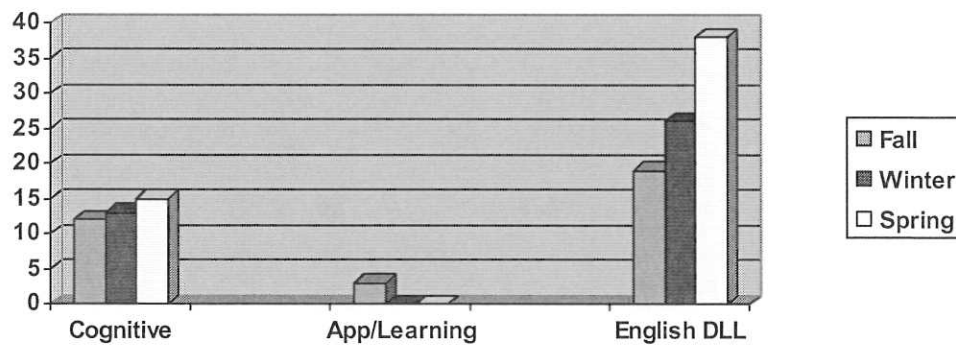
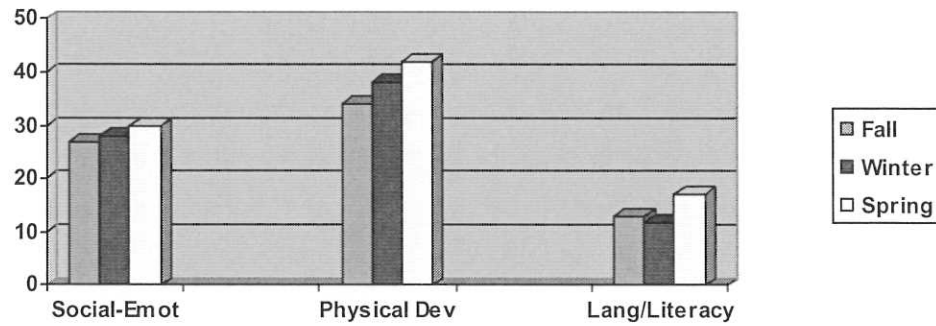
Domain	Fall	Winter	Spring	Gain %
Soc/Emotional	29	36	45	16
Physical Dev.	36	39	49	13
Lang/Literacy	14	17	22	7
Cognitive	10	13	17	7
Approaches to Learning	0	0	0	0
English DLL	n/a	n/a	n/a	n/a

Bear River Early Head Start Outcomes Report 2013-2014 Homebased Class: Cache 2



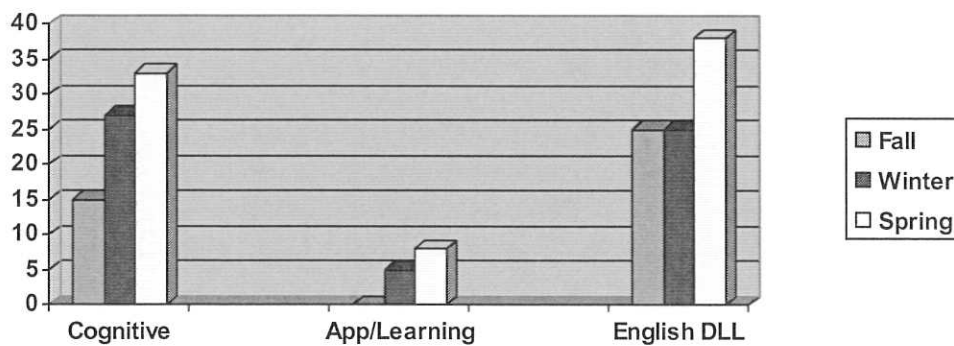
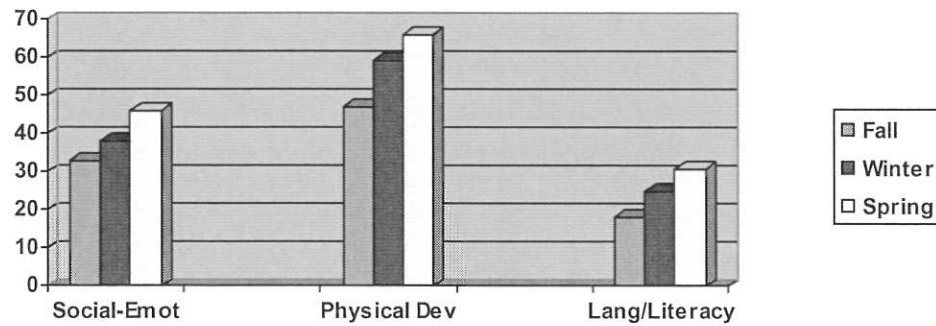
Domain	Fall	Winter	Spring	Gain %
Soc/Emotional	35	37	40	5
Physical Dev.	49	47	51	2
Lang/Literacy	16	20	22	6
Cognitive	18	18	23	
Approaches to Learning	0	0	0	0
English DLL	25	50	50	25

Bear River Early Head Start Outcomes Report 2013-2014 Homebased Class: Cache 3



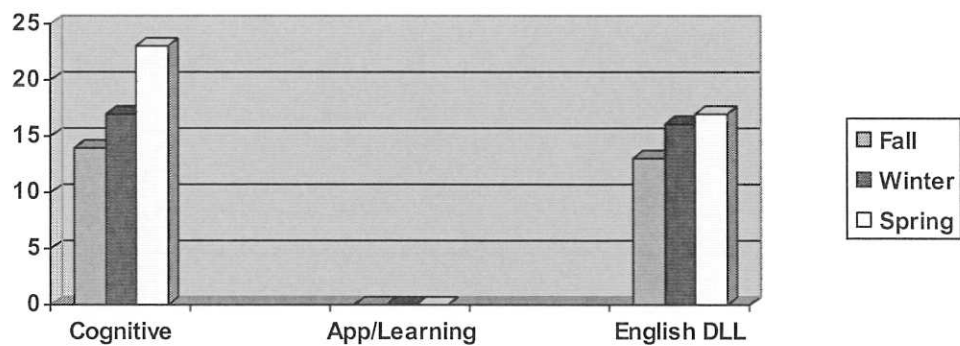
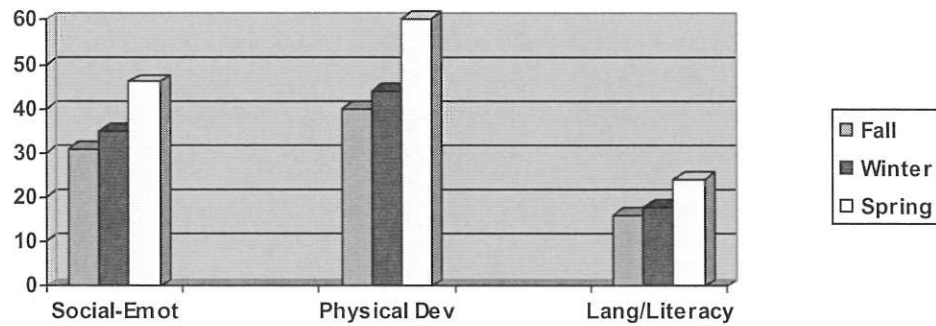
Domain	Fall	Winter	Spring	Gain %
Soc/Emotional	27	28	30	3
Physical Dev.	34	38	42	8
Lang/Literacy	13	12	17	4
Cognitive	12	13	15	3
Approaches to Learning	3	0	0	
English DLL	19	26	38	19

Bear River Early Head Start Outcomes Report 2013-2014 Homebased Class: Cache 4



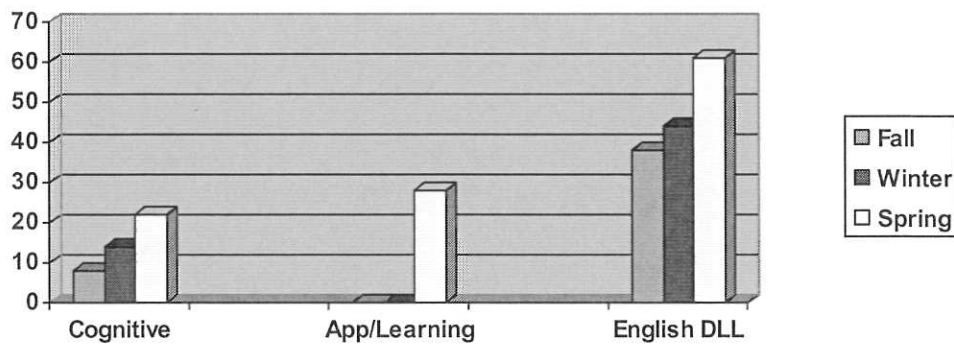
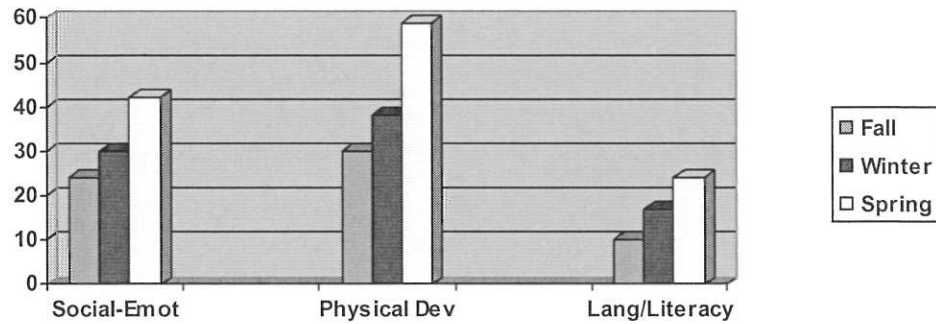
Domain	Fall	Winter	Spring	Gain %
Soc/Emotional	33	38	46	13
Physical Dev.	47	59	66	19
Lang/Literacy	18	25	31	13
Cognitive	15	27	33	18
Approaches to Learning	0	5	8	8
English DLL	25	25	38	13

Bear River Early Head Start Outcomes Report 2013-2014 Homebased Class: Cache 5



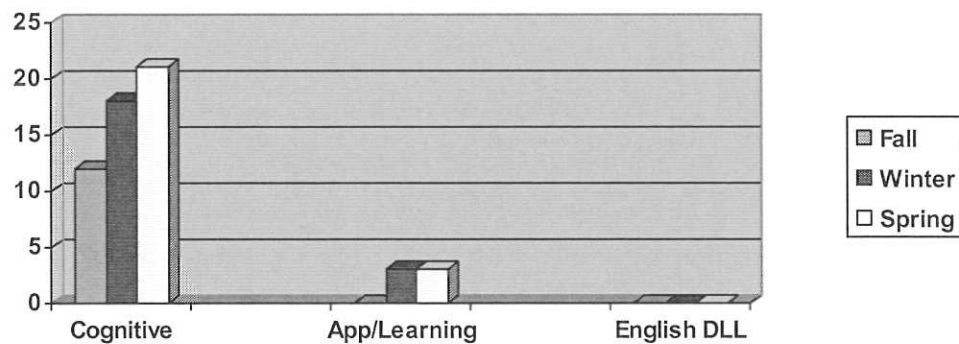
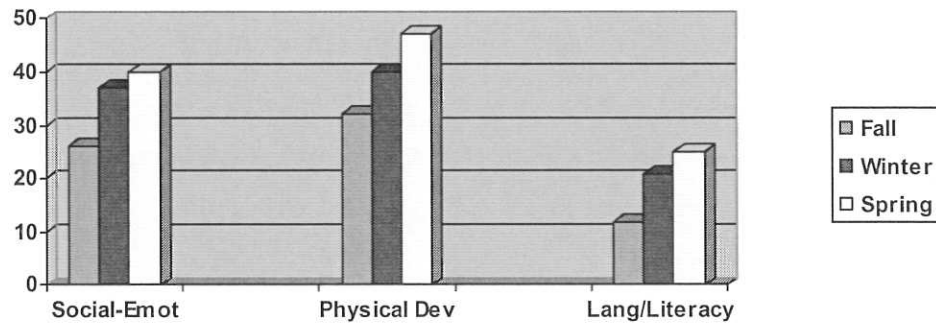
Domain	Fall	Winter	Spring	Gain %
Soc/Emotional	31	35	46	15
Physical Dev.	40	44	60	20
Lang/Literacy	16	18	24	8
Cognitive	14	17	23	9
Approaches to Learning	0	0	0	0
English DLL	13	16	17	4

Bear River Early Head Start Outcomes Report 2013-2014 Homebased Class: Cache 6



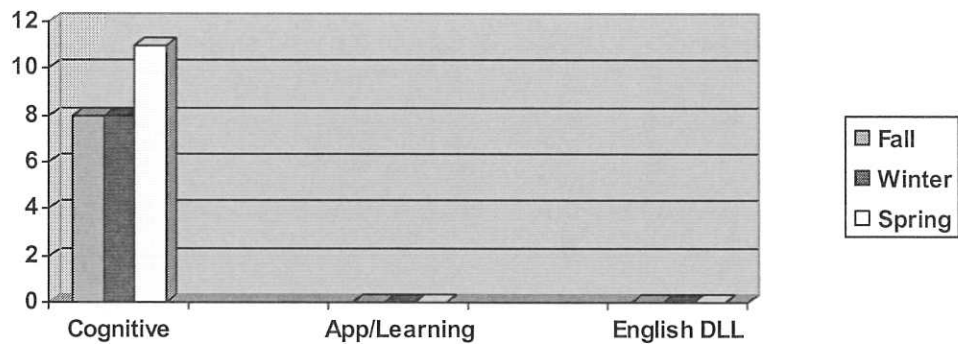
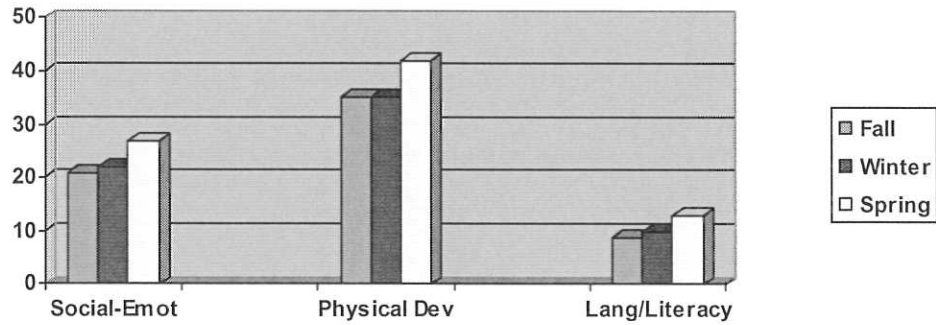
Domain	Fall	Winter	Spring	Gain %
Soc/Emotional	24	30	42	18
Physical Dev.	30	38	59	29
Lang/Literacy	10	17	24	14
Cognitive	8	14	22	16
Approaches to Learning	0	0	28	28
English DLL	38	44	61	23

Bear River Early Head Start Outcomes Report 2013-2014 Homebased Class: Franklin



Domain	Fall	Winter	Spring	Gain %
Soc/Emotional	26	37	40	14
Physical Dev.	32	40	47	15
Lang/Literacy	12	21	25	13
Cognitive	12	18	21	9
Approaches to Learning	0	3	3	3
English DLL	n/a	n/a	n/a	n/a

Bear River Early Head Start Outcomes Report 2013-2014 Homebased Class: Idaho 1



Domain	Fall	Winter	Spring	Gain %
Soc/Emotional	21	22	27	6
Physical Dev.	35	35	42	7
Lang/Literacy	9	10	13	4
Cognitive	8	8	11	3
Approaches to Learning	0	0	0	0
English DLL	n/a	n/a	n/a	n/a