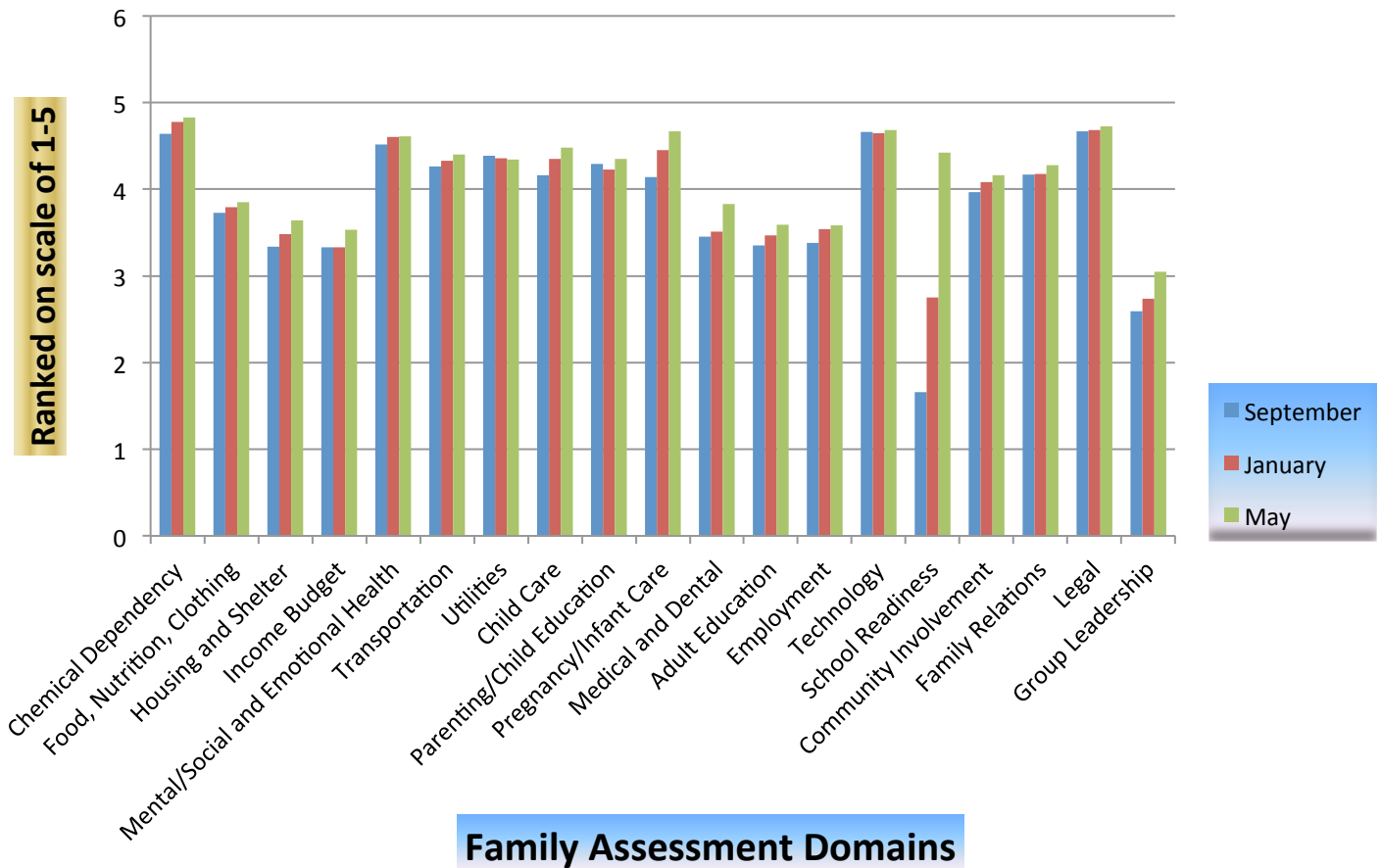


Parent, Family & Community Engagement Outcomes 2013-2014

	September	January	May
Family Well Being			
Chemical Dependency	4.64	4.78	4.83
Food, Nutrition, Clothing	3.73	3.79	3.85
Housing and Shelter	3.34	3.48	3.64
Income Budget	3.33	3.33	3.53
Mental/Social and Emotional Health	4.52	4.6	4.61
Transportation	4.26	4.33	4.4
Utilities	4.39	4.36	4.34
Average Total	4.03	4.1	4.17
Positive Parent/Child Relationships			
Child Care	4.16	4.35	4.48
Parenting/Child Education	4.29	4.23	4.35
Pregnancy/Infant Care	4.14	4.45	4.67
Average Total	4.19	4.34	4.5
Families as Life Long Learners			
Medical and Dental	3.45	3.51	3.83
Average Total	3.62	3.51	3.83
Families as Learners			
Adult Education	3.35	3.47	3.59
Employment	3.38	3.54	3.58
Technology	4.66	4.65	4.68
Average Total	3.79	3.88	3.95
Family Engagement in Transitions			
School Readiness	1.66	2.75	4.42
Average Total	1.66	2.75	4.42
Family Connections to Peer and Community			
Community Involvement	3.97	4.08	4.16
Family Relations	4.17	4.18	4.28
Legal	4.67	4.68	4.73
Average Total	4.27	4.31	4.39
Families as Advocates and Leaders			
Group Leadership	2.59	2.74	3.05
Total Average	2.59	2.74	3.05

Parent, Family & Community Outcomes



The Outcomes report will show averages from the Family Assessment tool that is used by Bear River Head Start. The Assessment tool has 18 Domains that have been tied into the seven Outcomes. The report is divided into areas served and Family Advocates caseloads. The Assessment collects and analyzes information in order to assist families in setting goals; linking to community resources; and supports family safety, health, financial independence and self sufficiency. The assessment range is 1-5 with five being the highest. Family Advocates are encouraged to set goals with families and link them to needed resources in any area that fall below a three on the assessment. The Outcomes can also be used to assess areas where staff can advocate in communities for increased Services in the communities. Supervisors can provide further training to Advocates based on averages on the Outcome report. This report covers assessments completed with families during the first 45 days of enrollment in Bear River Head Start. Then families are reassessed each month with reports done again in January and May.