

**Bear River Head Start/Early Head Start
Homebased School Readiness Report and Outcomes
2014-2015**

School readiness outcomes are tracked on each child three times per year in the Fall, Winter and Spring. The baseline for each child is the Fall data. In between reporting dates, Family Educators and parents identify which skills are "next steps" for the child, and set school readiness goals and plan home visit activities to support those goals. In this way, the curricula is individualized for each child according to his or her developmental needs and interests.

Data is tabulated and the results can be viewed by individual child or by groups. Group categories include age, gender, class, and dual/non dual language learners. Areas of low or stagnant progress are addressed in several ways. Trainings are provided to family educators that focus on domains needing improvement; sometimes knowledge can be sparse in certain areas or the educator is lacking ideas in how to support growth. From a wider perspective, if an outcome domain is low by class, then socialization groups can be used to help the parents understand ways to support the progress of their child, and ideas are incorporated into socialization activities.

One discovery this year was that the PHS Dual Language Learners had huge gains from fall to winter in all domains, with most areas at a minimum doubling. This group of children had fall baselines that were significantly lower than their Non- Dual Language learners, but were able to increase their skills and knowledge to be on par with their peers.

Positive outcomes for children in the homebased option are based on the Family Educator/Parent partnership, and parent follow-through on

home visit activities. Parent participation is crucial for the child to have ample opportunity to practice new skills throughout the week with focused interaction.

The Head Start Outcomes Framework for children birth to five are outlined below:

Head Start Early Childhood Learning Domains for Preschool children:

Social/Emotional Development (relationships, self-concept, self regulation, emotional & behavioral health)
Physical Development & Health (health status, health knowledge and practice, gross motor skills, and fine motor skills)
Language (receptive and expressive)
Approaches to Learning (initiative, curiosity, persistence, attentiveness, cooperation)
Literacy (book appreciation and knowledge, phonological awareness, alphabet knowledge, print concepts, early writing)
Math & Logic (number concepts, quantities, patterns, measurements & comparisons)
Science (skills and methods, conceptual knowledge of natural and physical world)
Social Studies (self, family, community, people and the environment, history and events)
Creative Arts (music, movement & dance, art, drama)
English Language Development (receptive and expressive English language skills, engagement in English literacy activities)

School Readiness for Early Head Start children is based on providing a secure foundation for positive parent/child relationships (attachment)

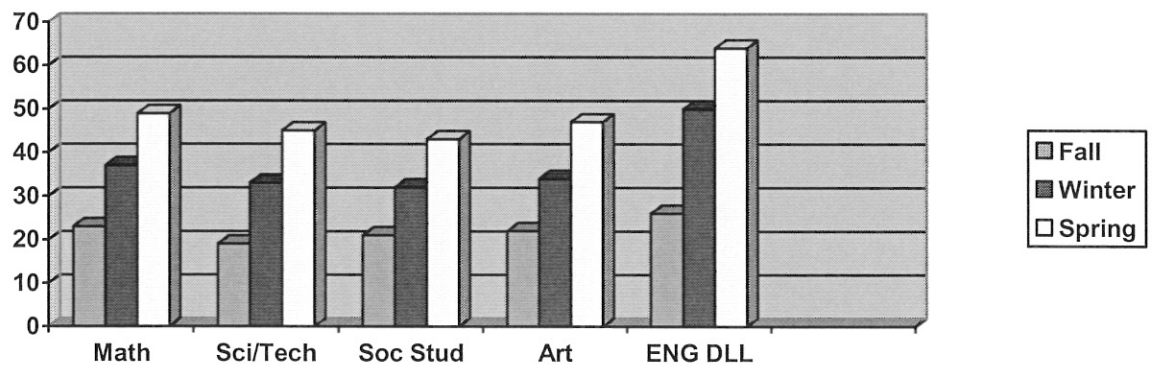
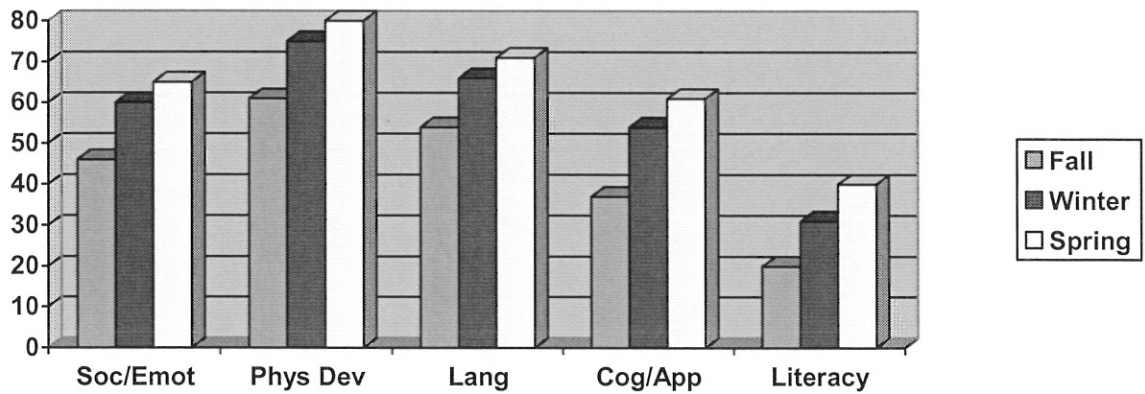
and a safe place for children to practice early learning skills that will help them be ready to enter preschool ready to succeed and learn.

Early Head Start Infant/Toddler Five Essential Domains:

Social/Emotional (relationships, self regulation
Physical Development (traveling skills, balancing, gross motor, fine motor)
Language & Literacy (listening, understanding, expressive vocabulary)
Cognitive (attends, engages, persists, curiosity, memory)
Approaches to Learning (persists, self regulation, makes connections, solves problems)
Additional Domain: English Language Development (receptive/expressive

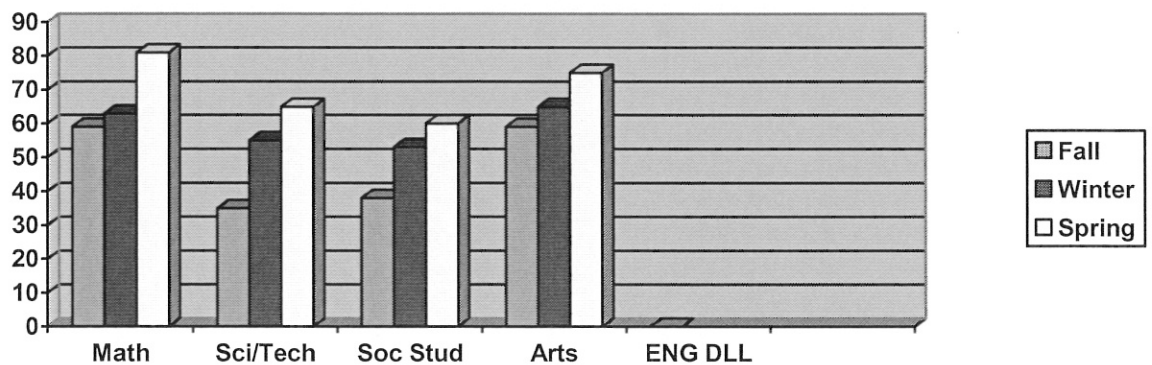
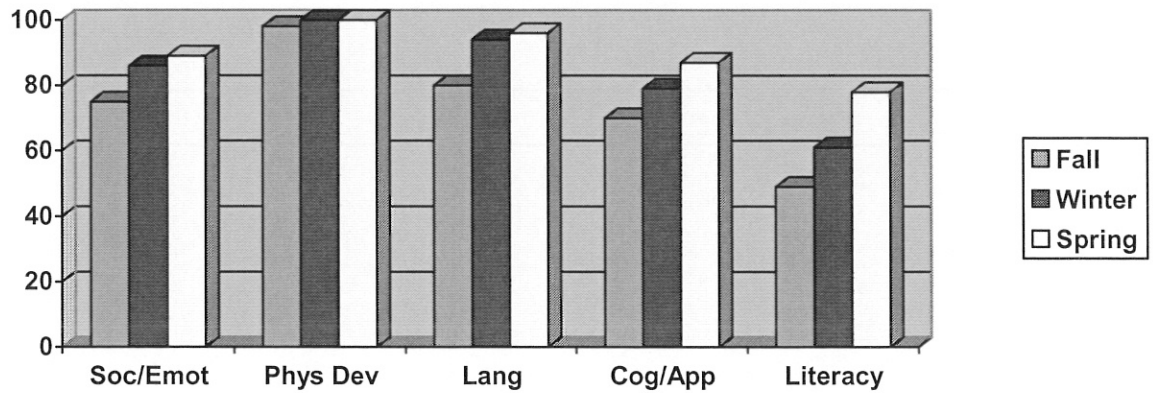
The Preschool Homebased Outcome Charts are presented below, followed by the Early Head Start Outcome Charts:

Bear River Head Start Outcomes Progress 2014-2015 All Homebased Children



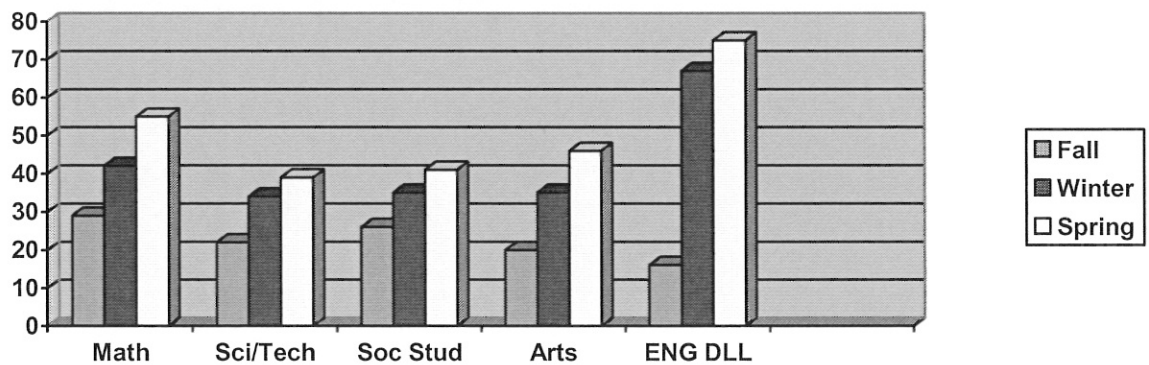
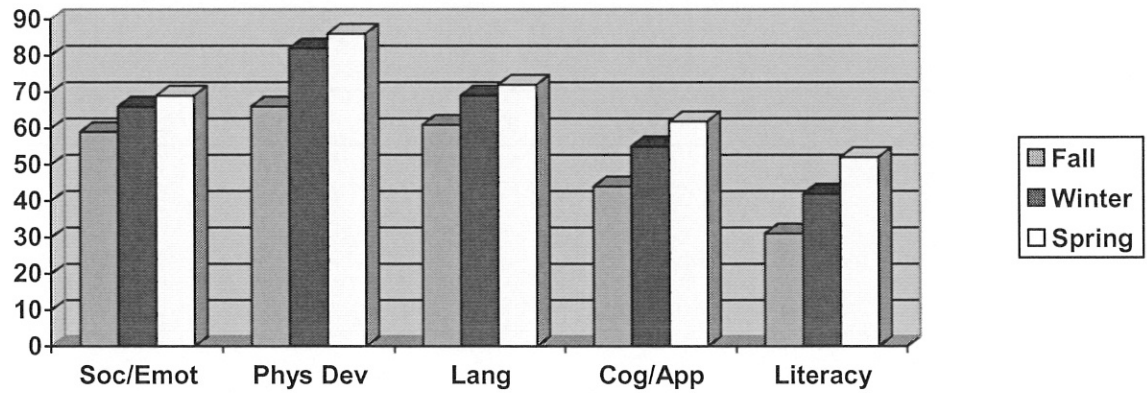
DOMAIN	Fall	Winter	Spring	Total Year % Gain
Social-Emotional	46	60	65	19
Physical Development	61	75	80	19
Language	54	66	71	17
Cognitive/Approaches to Learning	37	54	61	24
Literacy	20	31	40	20
Math	23	37	49	26
Science/Technology	19	33	45	26
Social Studies	21	32	43	22
Creative Arts	22	34	47	25
English Language (DLL)	26	50	64	38

Bear River Head Start Outcomes Progress 2014-2015 Five Year Olds



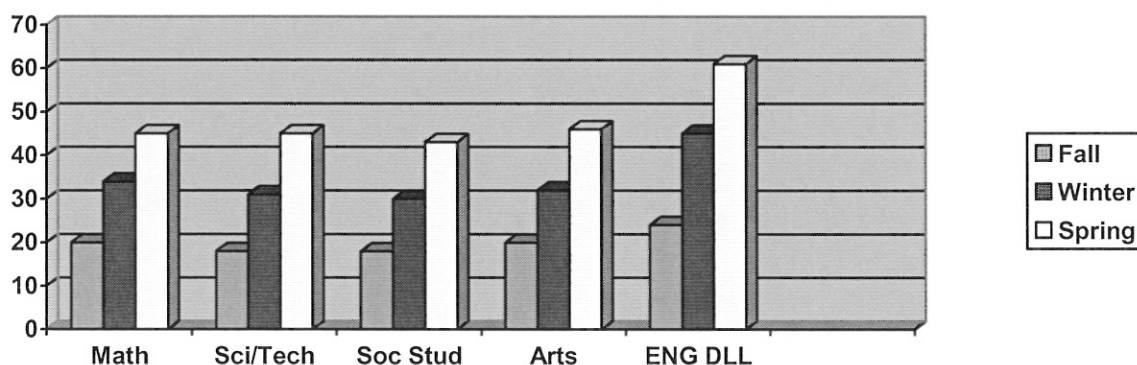
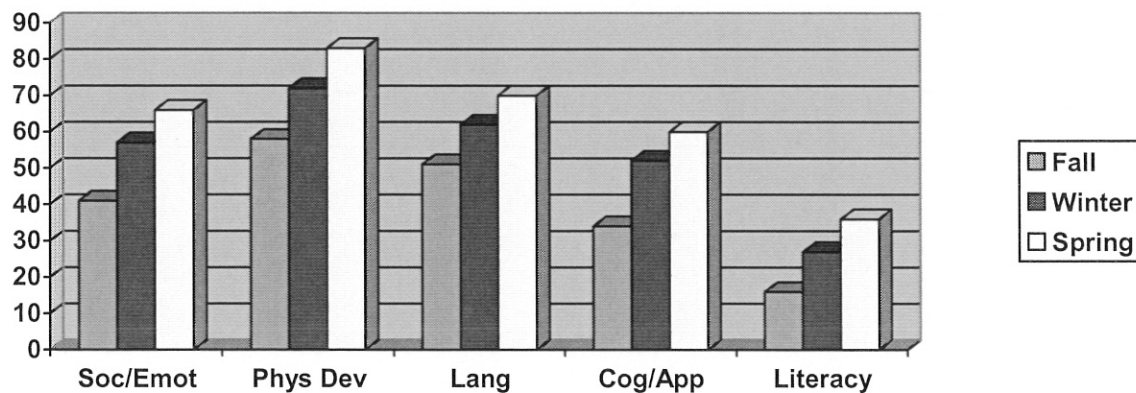
DOMAIN	Fall	Winter	Spring	Total Year % Gain
Social-Emotional	75	86	89	14
Physical Development	98	100	100	2
Language	80	94	96	16
Cognitive/Approaches to Learning	70	79	87	17
Literacy	49	61	78	29
Math	59	63	81	22
Science/Technology	35	55	65	30
Social Studies	38	53	60	22
Creative Arts	59	65	75	16
English Language (DLL)	n/a	n/a	n/a	n/a

Bear River Head Start Outcomes Progress 2014-2015 Four Year Olds



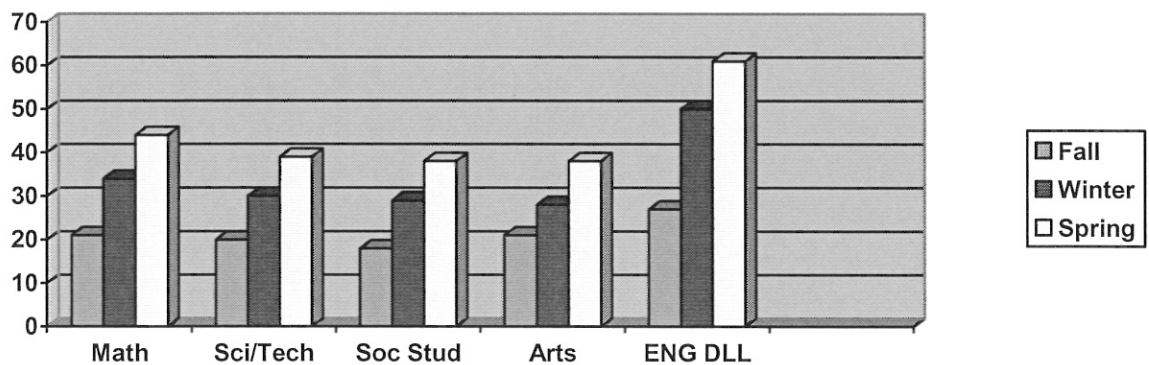
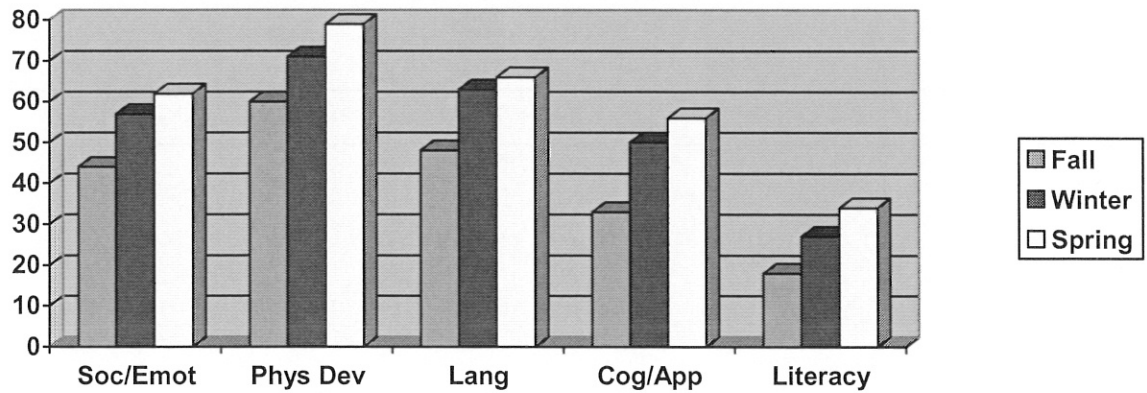
DOMAIN	Fall	Winter	Spring	Total Year % Gain
Social-Emotional	59	66	69	10
Physical Development	66	82	86	20
Language	61	69	72	11
Cognitive/Approaches to Learning	44	55	62	18
Literacy	31	42	52	21
Math	29	42	55	26
Science/Technology	22	34	39	17
Social Studies	26	35	41	15
Creative Arts	20	35	46	26
English Language (DLL)	16	67	75	59

Bear River Head Start Outcomes Progress 2014-2015 Three Year Olds



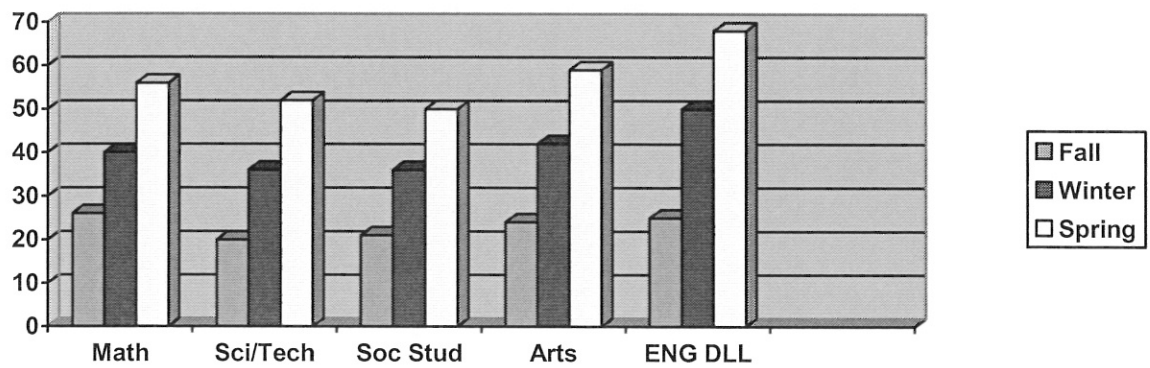
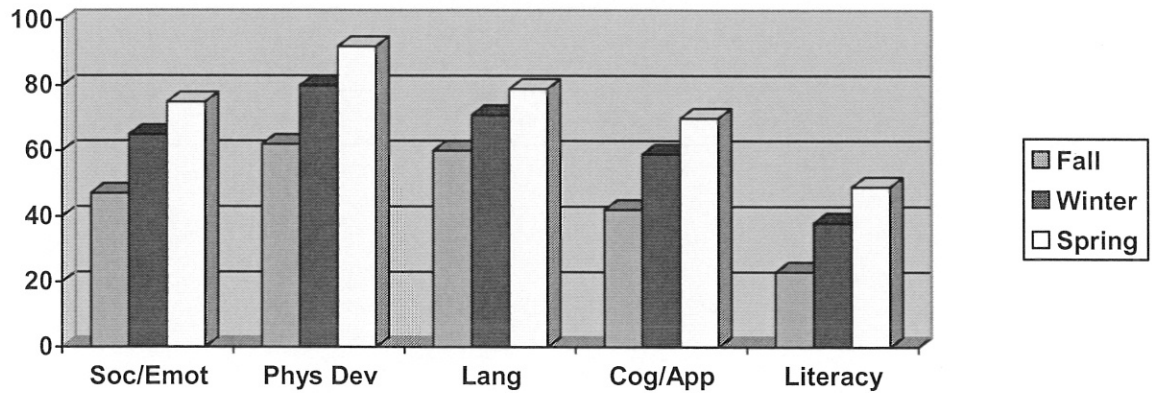
DOMAIN	Fall	Winter	Spring	Total Year % Gain
Social-Emotional	41	57	66	25
Physical Development	58	72	83	25
Language	51	62	70	19
Cognitive/Approaches to Learning	34	52	60	26
Literacy	16	27	36	20
Math	20	34	45	25
Science/Technology	18	31	45	27
Social Studies	18	30	43	25
Creative Arts	20	32	46	26
English Language (DLL)	24	45	61	37

Bear River Head Start Outcomes Progress 2014-2015 All Boys



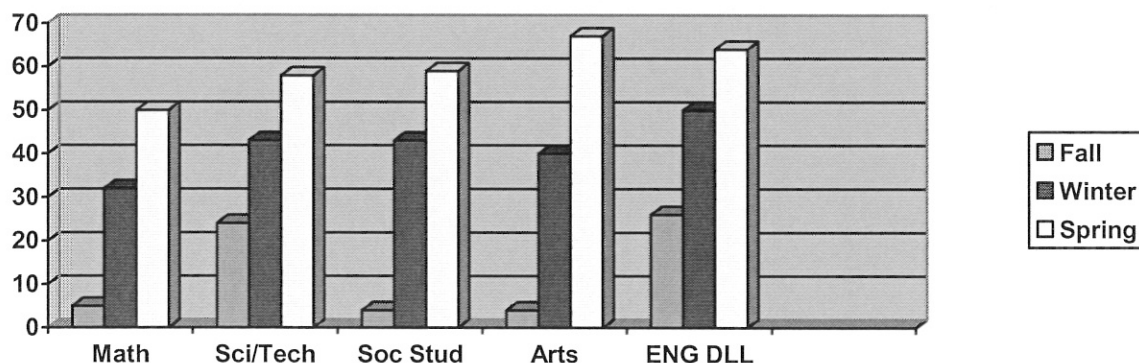
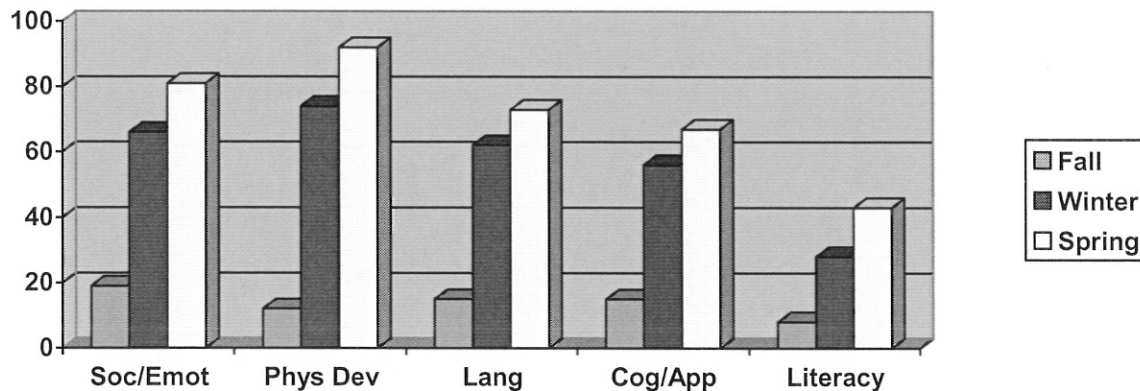
DOMAIN	Fall	Winter	Spring	Total Year % Gain
Social-Emotional	44	57	62	18
Physical Development	60	71	79	19
Language	48	63	66	18
Cognitive/Approaches to Learning	33	50	56	23
Literacy	18	27	34	16
Math	21	34	44	23
Science/Technology	20	30	39	19
Social Studies	18	29	38	20
Creative Arts	21	28	38	17
English Language (DLL)	27	50	61	34

Bear River Head Start Outcomes Progress 2014-2015 All Girls



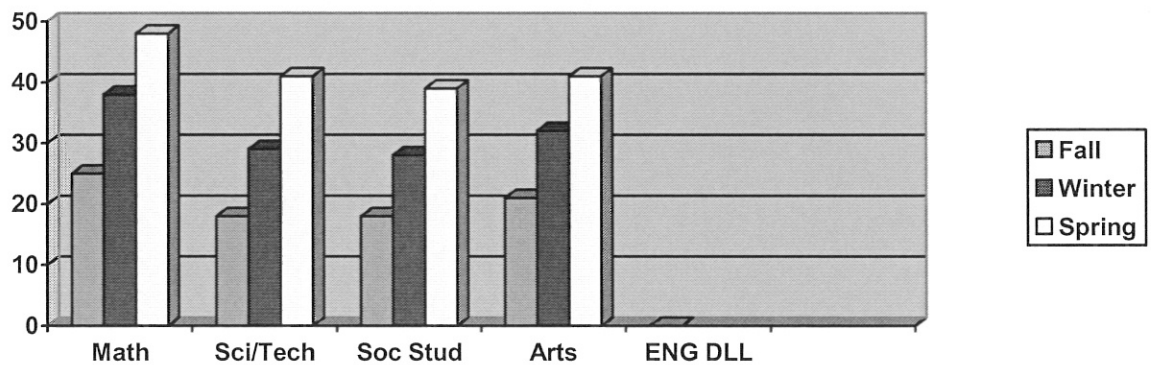
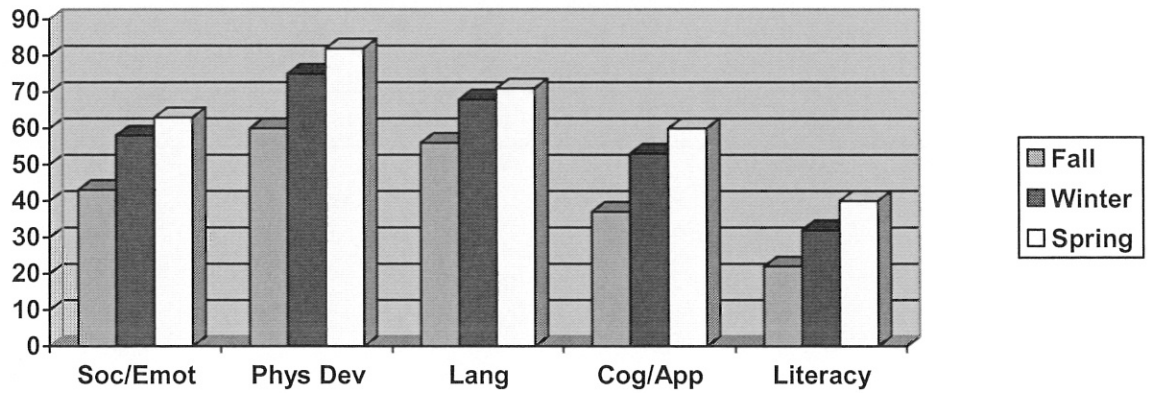
DOMAIN	Fall	Winter	Spring	Total Year % Gain
Social-Emotional	47	65	75	28
Physical Development	62	80	92	30
Language	60	71	79	19
Cognitive/Approaches to Learning	42	59	70	28
Literacy	23	38	49	26
Math	26	40	56	30
Science/Technology	20	36	52	32
Social Studies	21	36	50	29
Creative Arts	24	42	59	35
English Language (DLL)	25	50	68	43

Bear River Head Start Outcomes Progress 2014-2015 Dual Language Learners



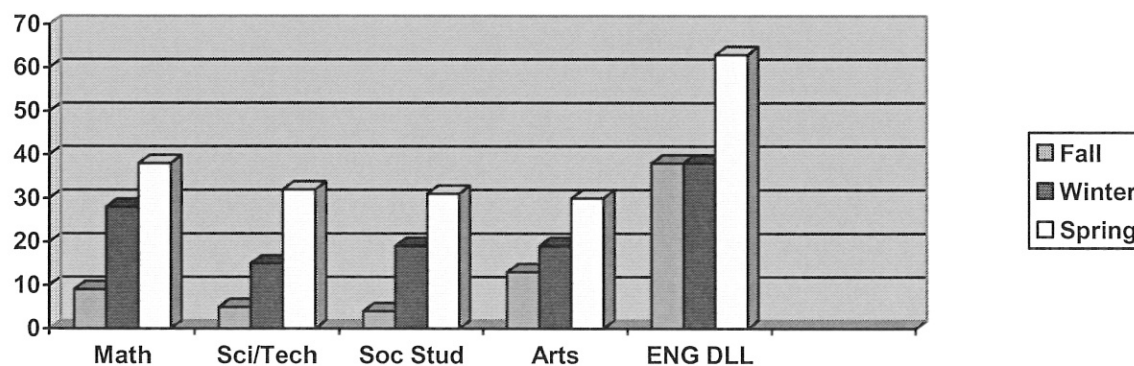
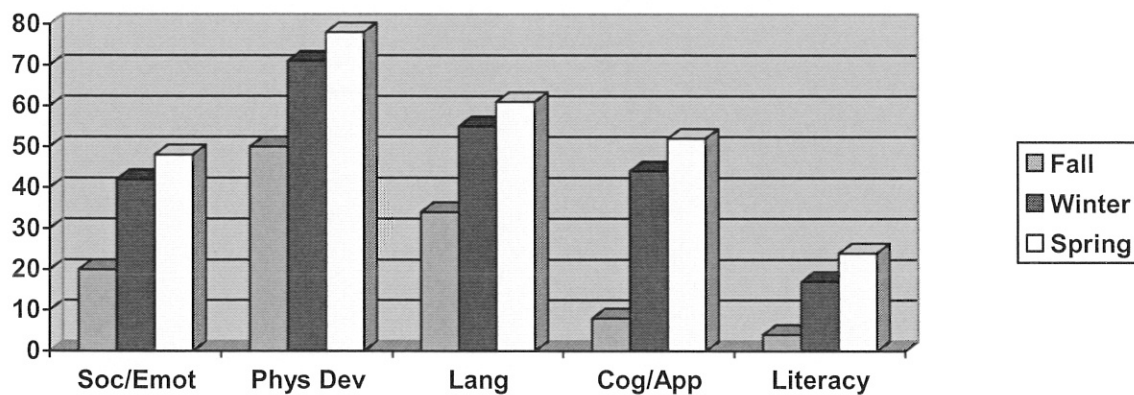
DOMAIN	Fall	Winter	Spring	Total Year % Gain
Social-Emotional	19	66	81	62
Physical Development	12	74	92	80
Language	15	62	73	58
Cognitive/Approaches to Learning	15	56	67	52
Literacy	8	28	43	35
Math	5	32	50	45
Science/Technology	24	43	58	34
Social Studies	4	43	59	55
Creative Arts	4	40	67	63
English Language (DLL)	26	50	64	38

Bear River Head Start Outcomes Progress 2014-2015 Non Dual Language Learners



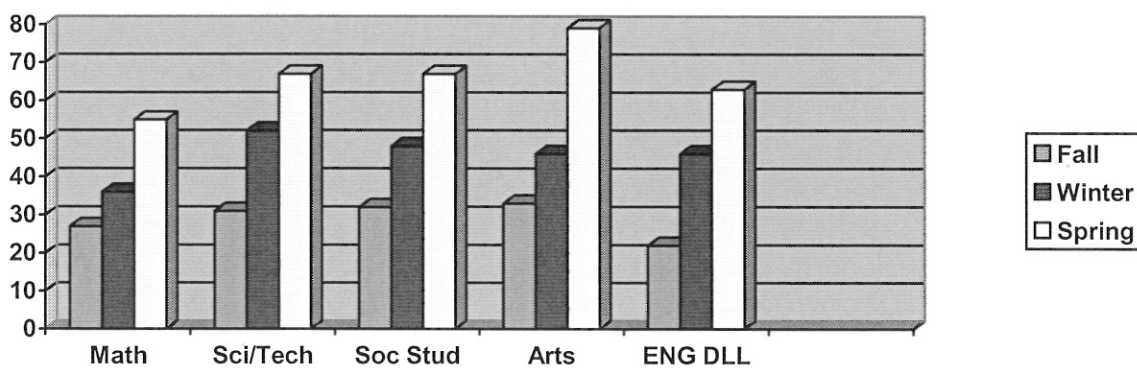
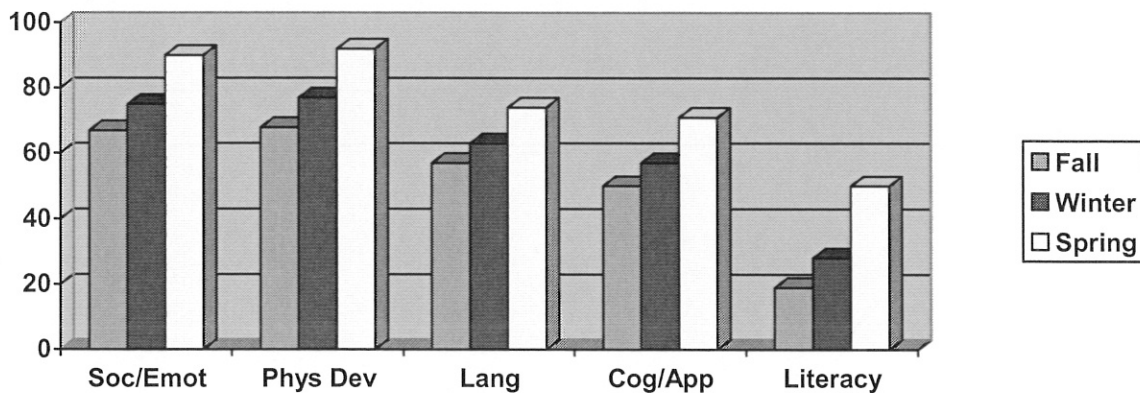
DOMAIN	Fall	Winter	Spring	Total Year % Gain
Social-Emotional	43	58	63	20
Physical Development	60	75	82	22
Language	56	68	71	15
Cognitive/Approaches to Learning	37	53	60	23
Literacy	22	32	40	18
Math	25	38	48	23
Science/Technology	18	29	41	23
Social Studies	18	28	39	21
Creative Arts	21	32	41	20
English Language (DLL)	n/a	n/a	n/a	n/a

Bear River Head Start Outcomes Progress 2014-2015 Box Elder



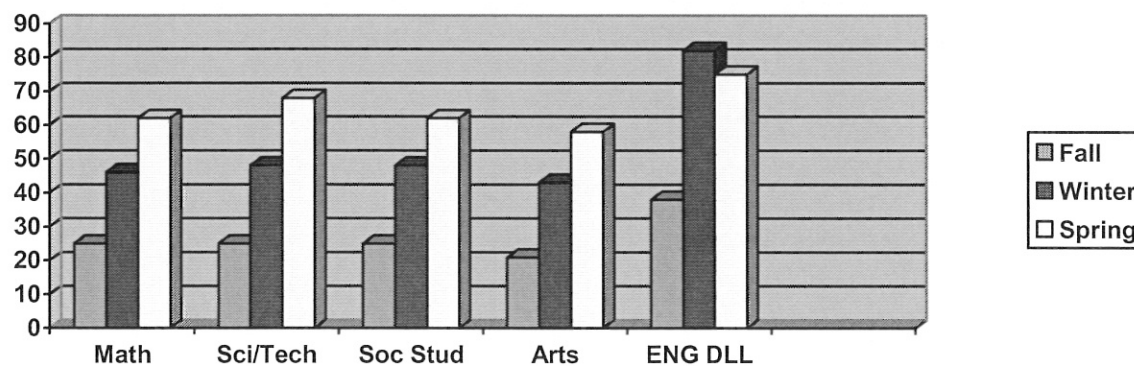
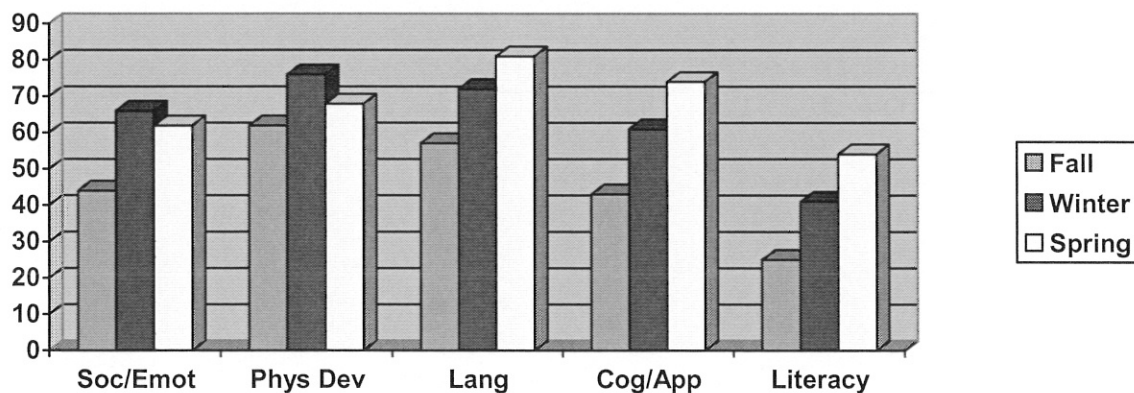
DOMAIN	Fall	Winter	Spring	Total Year % Gain
Social-Emotional	20	42	48	28
Physical Development	50	71	78	28
Language	34	55	61	27
Cognitive/Approaches to Learning	8	44	52	44
Literacy	4	17	24	20
Math	9	28	38	29
Science/Technology	5	15	32	27
Social Studies	4	19	31	27
Creative Arts	13	19	30	17
English Language (DLL)	38	38	63	25

Bear River Head Start Outcomes Progress 2014-2015 Cache



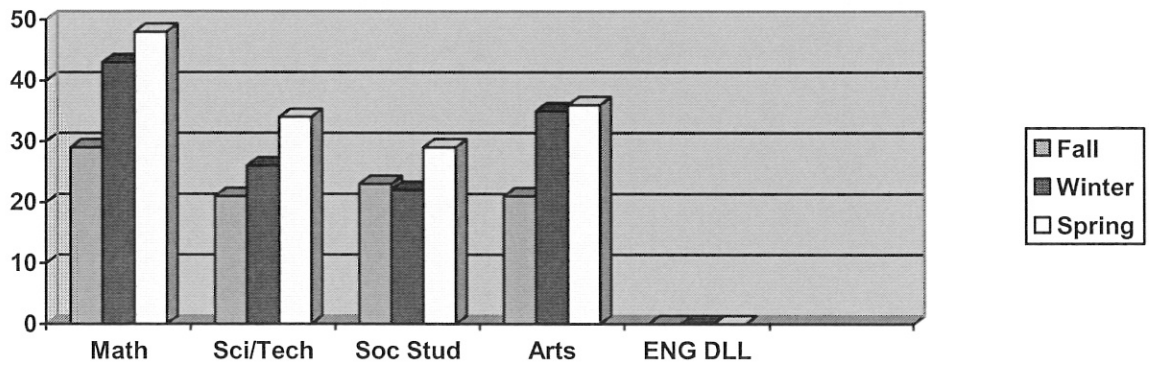
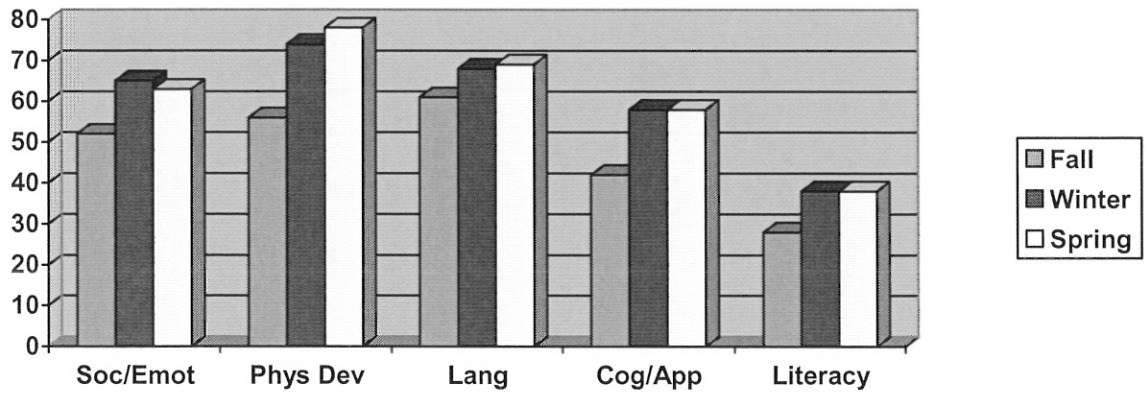
DOMAIN	Fall	Winter	Spring	Total Year % Gain
Social-Emotional	67	75	90	23
Physical Development	68	77	92	24
Language	57	63	74	17
Cognitive/Approaches to Learning	50	57	71	21
Literacy	19	28	50	31
Math	27	36	55	28
Science/Technology	31	52	67	36
Social Studies	32	48	67	35
Creative Arts	33	46	79	46
English Language (DLL)	22	46	63	41

Bear River Head Start Outcomes Progress 2014-2015 Franklin



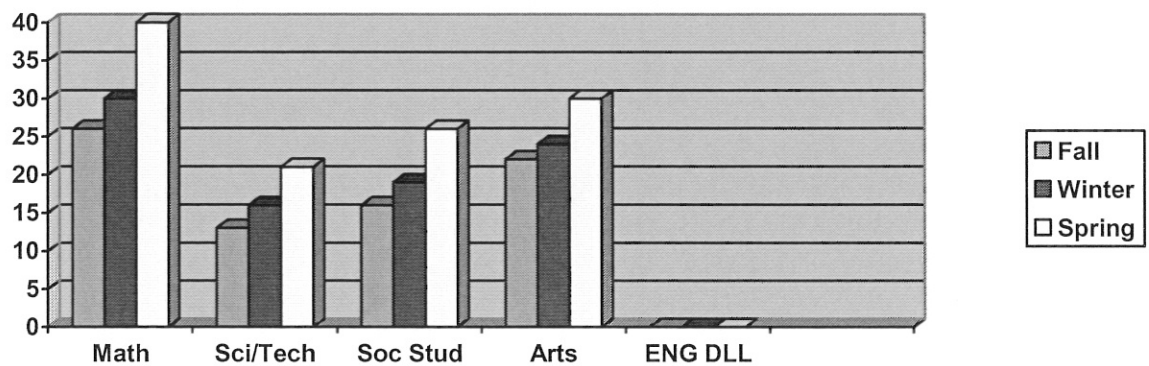
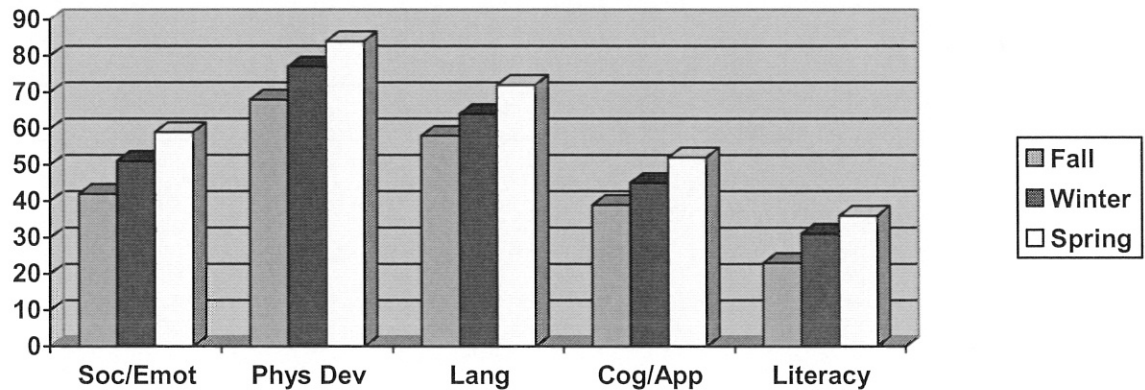
DOMAIN	Fall	Winter	Spring	Total Year % Gain
Social-Emotional	44	66	62	18
Physical Development	62	76	68	6
Language	57	72	81	24
Cognitive/Approaches to Learning	43	61	74	43
Literacy	25	41	54	29
Math	25	46	62	37
Science/Technology	25	48	68	43
Social Studies	25	48	62	37
Creative Arts	21	43	58	37
English Language (DLL)	38	82	75	37

Bear River Head Start Outcomes Progress 2014-2015 Rich



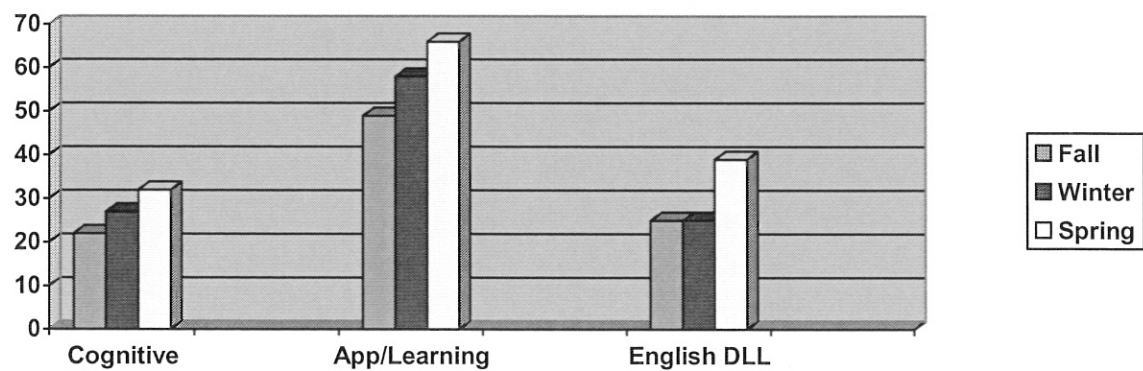
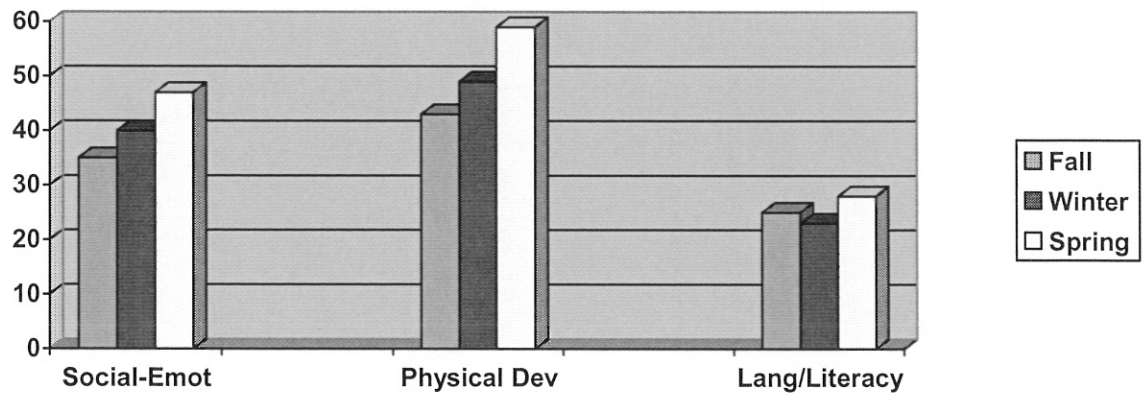
DOMAIN	Fall	Winter	Spring	Total Year % Gain
Social-Emotional	52	65	63	11
Physical Development	56	74	78	22
Language	61	68	69	8
Cognitive/Approaches to Learning	42	58	58	16
Literacy	28	38	38	10
Math	29	43	48	19
Science/Technology	21	26	34	13
Social Studies	23	22	29	6
Creative Arts	21	35	36	15
English Language (DLL)	n/a	n/a	n/a	n/a

Bear River Head Start Outcomes Progress 2014-2015 Snowville



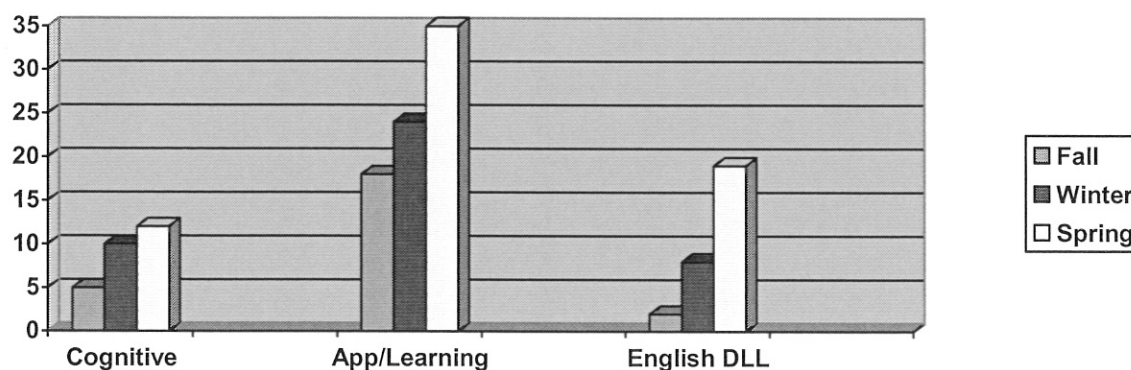
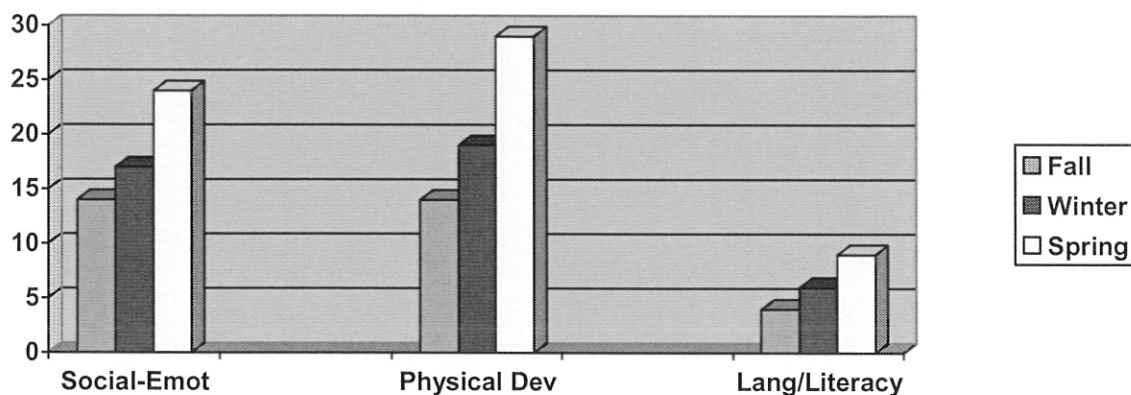
DOMAIN	Fall	Winter	Spring	Total Year % Gain
Social-Emotional	42	51	59	17
Physical Development	68	77	84	16
Language	58	65	72	14
Cognitive/Approaches to Learning	39	45	52	13
Literacy	23	31	36	13
Math	26	30	40	14
Science/Technology	13	16	21	8
Social Studies	16	19	26	10
Creative Arts	22	24	30	8
English Language (DLL)	n/a	n/a	n/a	n/a

Bear River Early Head Start Outcomes Progress 2014-2015 All Homebased Children



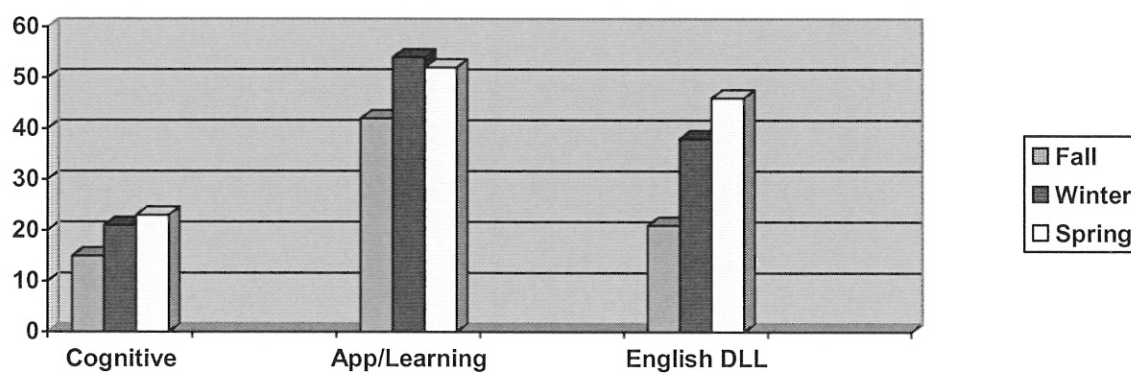
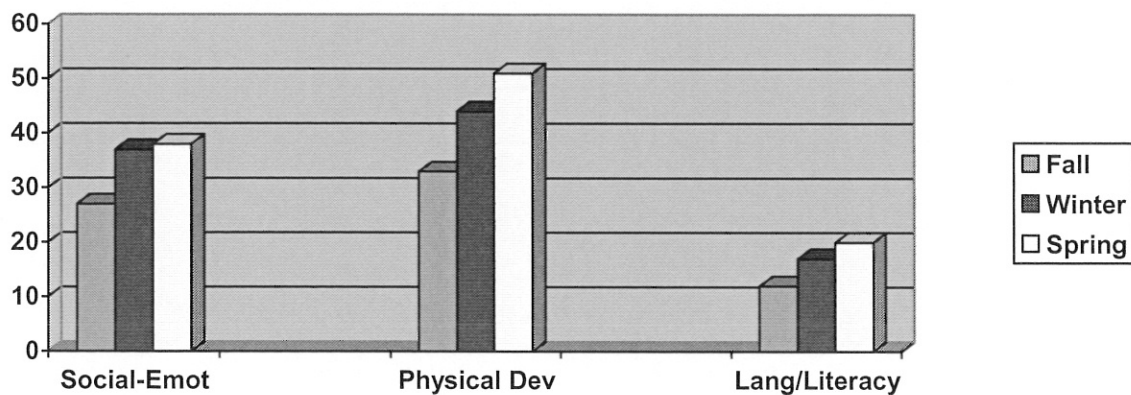
DOMAIN	Fall	Winter	Spring	Total Year % Gain
Social-Emotional	35	40	47	12%
Physical Development	43	49	59	16%
Language/Literacy	25	23	27	2%
Cognitive	22	27	32	10%
Approaches to Learning	49	58	66	17%
English Language (DLL)	25	25	39	14%

Bear River Early Head Start Outcomes Progress 2014-2015 Children 0-12 Months



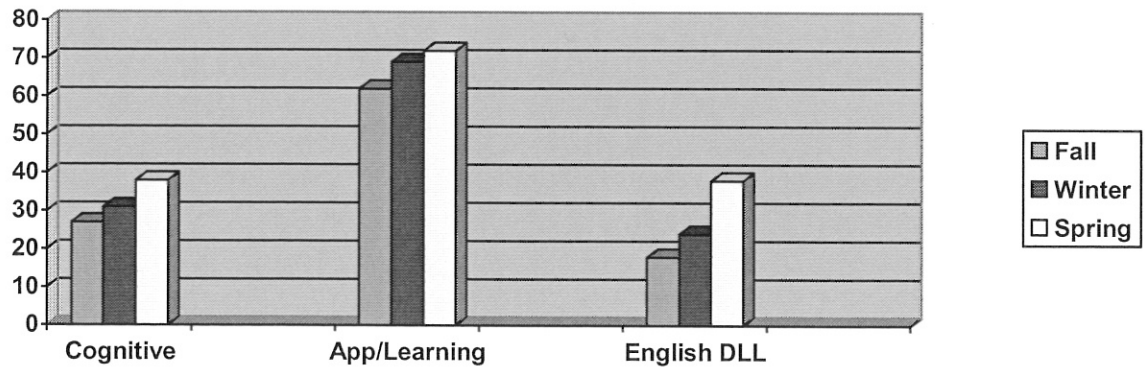
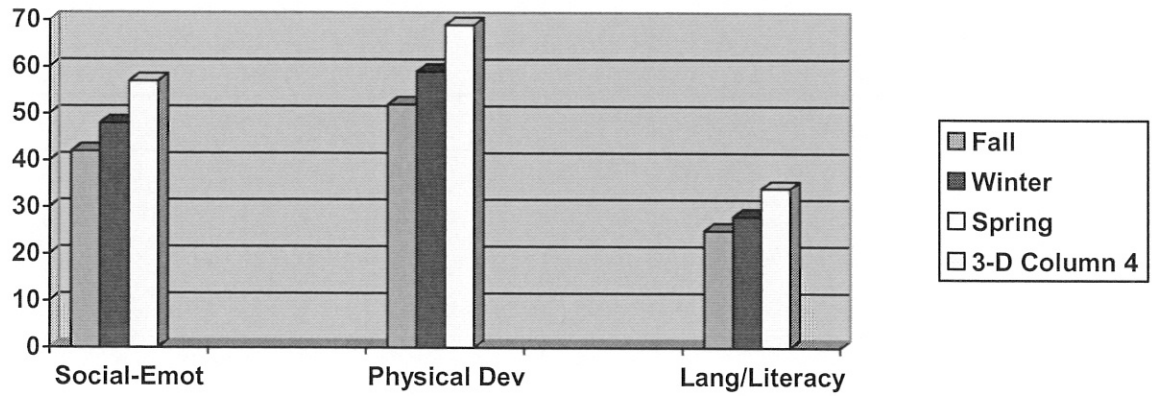
DOMAIN	Fall	Winter	Spring	Total Year % Gain
Social-Emotional	14	17	24	10%
Physical Development	14	19	29	15%
Language/Literacy	4	6	9	5%
Cognitive	5	8	12	7%
Approaches to Learning	18	24	35	17%
English Language (DLL)	2	10	19	17%

Bear River Early Head Start Outcomes Progress 2014-2015 Children 13-24 Months



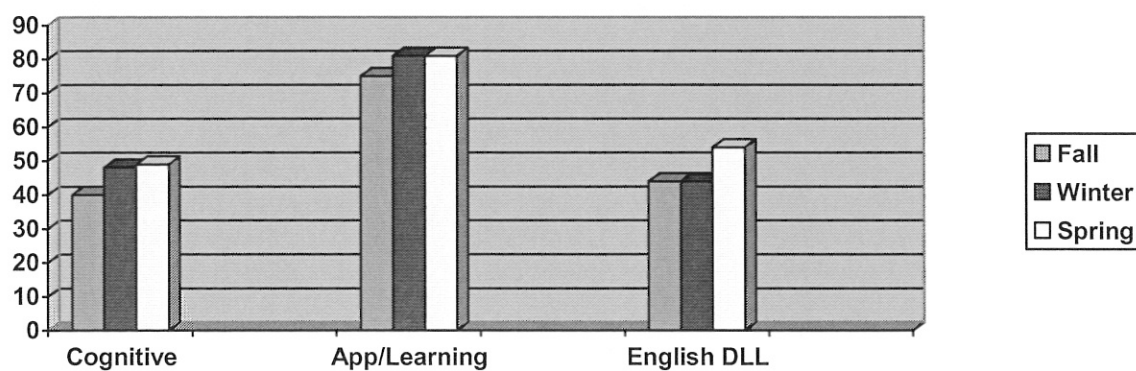
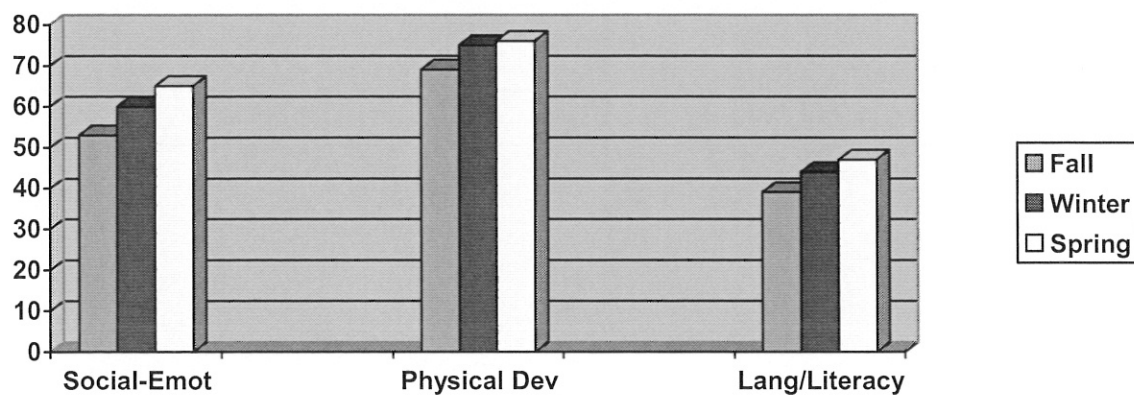
DOMAIN	Fall	Winter	Spring	Total Year % Gain
Social-Emotional	27	37	38	9%
Physical Development	33	44	51	18%
Language/Literacy	12	17	20	8%
Cognitive	15	21	23	8%
Approaches to Learning	42	54	52	10%
English Language (DLL)	21	38	46	25%

Bear River Early Head Start Outcomes Progress 2014-2015 Children 25-36 Months



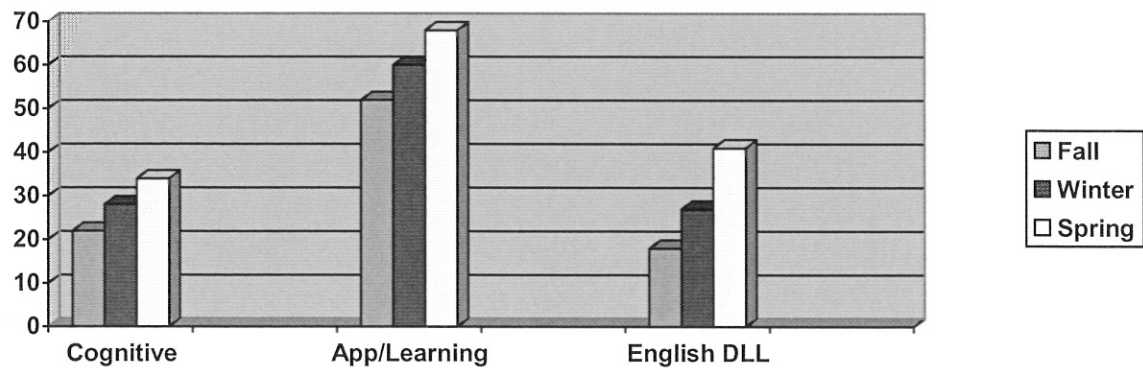
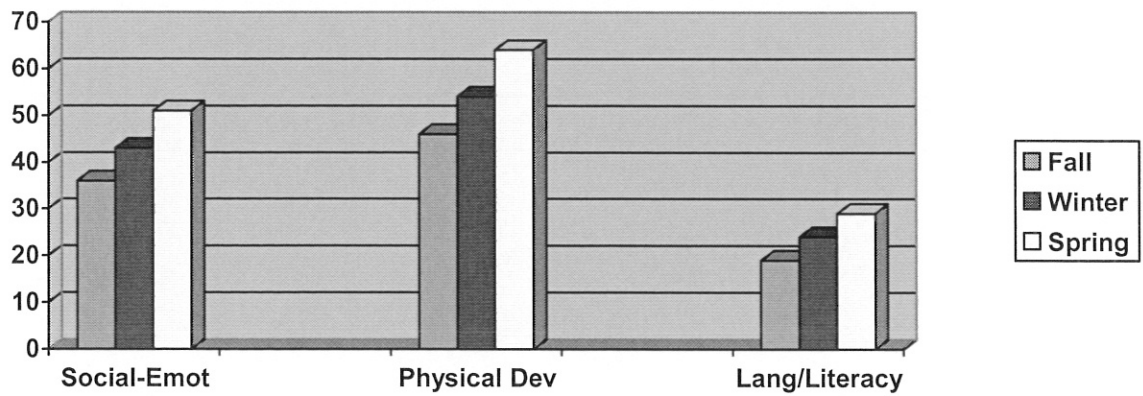
DOMAIN	Fall	Winter	Spring	Total Year % Gain
Social-Emotional	42	48	57	15%
Physical Development	52	59	69	17%
Language/Literacy	25	28	34	9%
Cognitive	27	31	38	9%
Approaches to Learning	62	69	72	10%
English Language (DLL)	18	24	38	20%

Bear River Early Head Start Outcomes Progress 2014-2015 Children 36+ Months



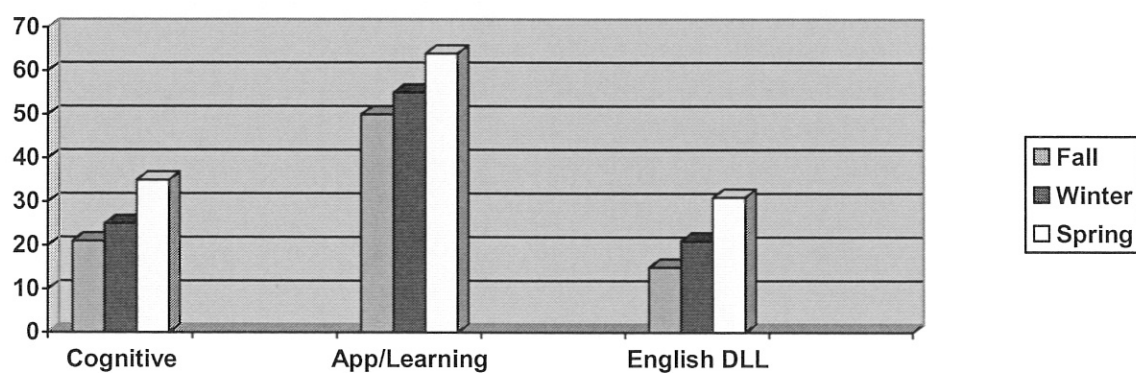
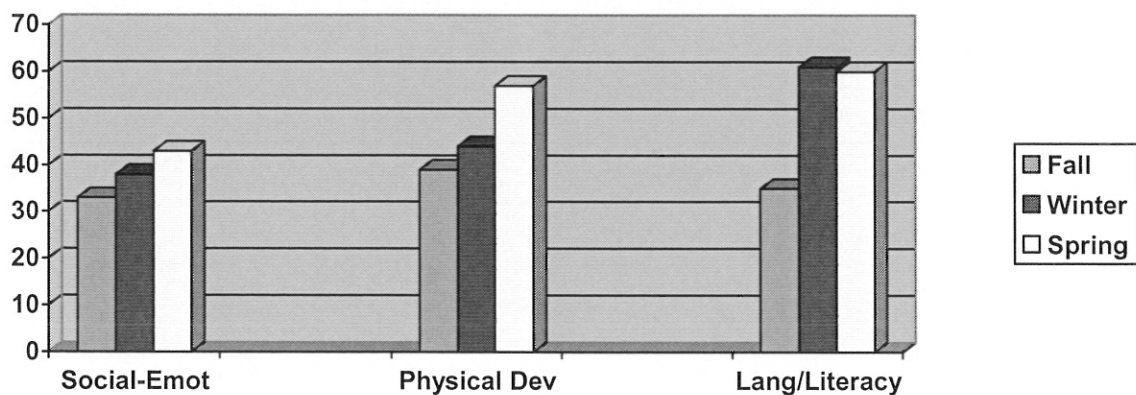
DOMAIN	Fall	Winter	Spring	Total Year % Gain
Social-Emotional	53	60	65	12%
Physical Development	69	75	76	7%
Language/Literacy	39	44	47	8%
Cognitive	40	48	49	9%
Approaches to Learning	75	81	81	6%
English Language (DLL)	44	44	54	10%

Bear River Early Head Start Outcomes Progress 2014-2015 All Homebased Boys



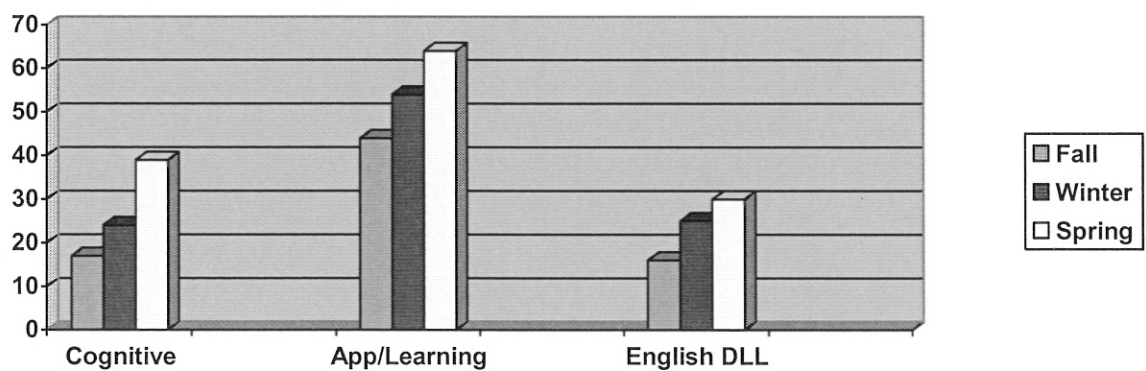
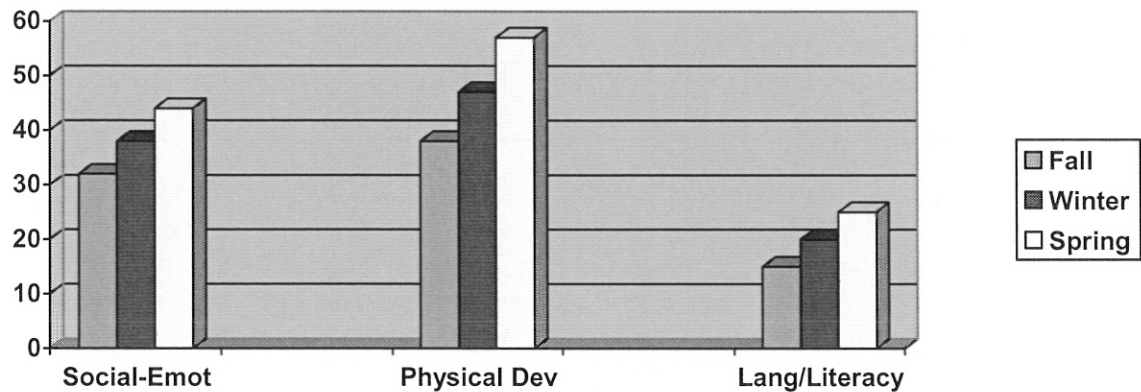
DOMAIN	Fall	Winter	Spring	Total Year % Gain
Social-Emotional	36	43	51	15%
Physical Development	46	54	64	18%
Language/Literacy	19	24	29	10%
Cognitive	22	28	34	12%
Approaches to Learning	52	60	68	16%
English Language (DLL)	18	27	41	23%

Bear River Early Head Start Outcomes Progress 2014-2015 All Homebased Girls



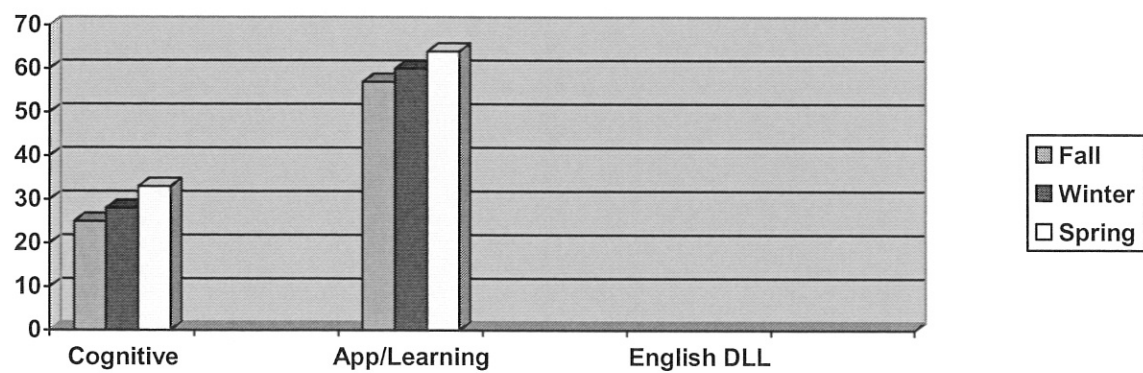
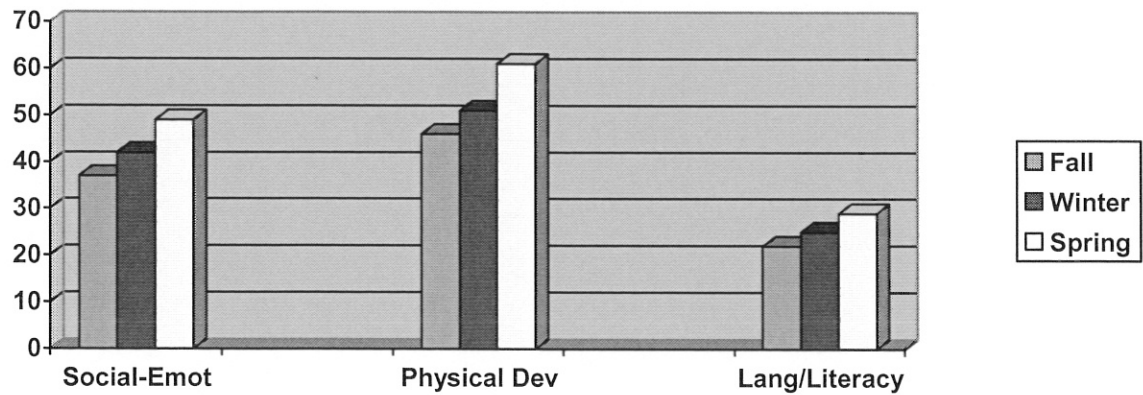
DOMAIN	Fall	Winter	Spring	Total Year % Gain
Social-Emotional	33	38	43	10%
Physical Development	39	44	57	18%
Language/Literacy	35	61	60	25%
Cognitive	21	25	35	14%
Approaches to Learning	50	55	64	14%
English Language (DLL)	15	21	31	16%

Bear River Early Head Start Outcomes Progress 2014-2015 Dual Language Learners



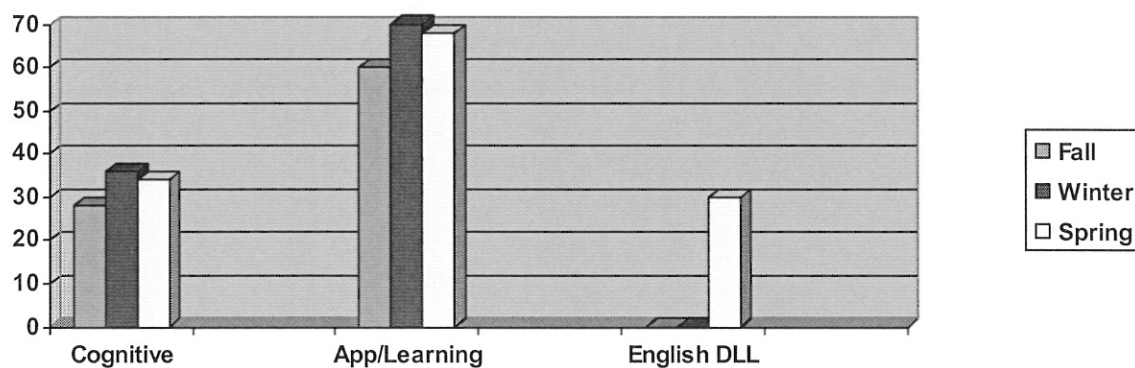
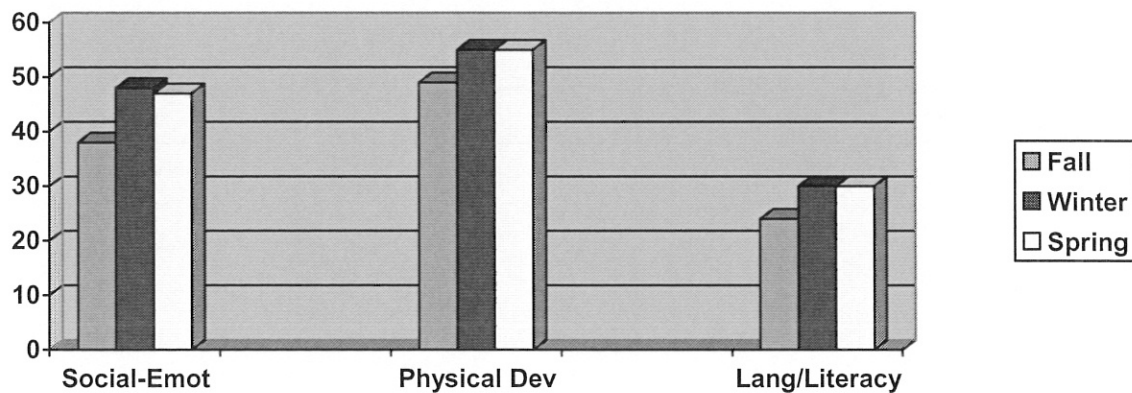
DOMAIN	Fall	Winter	Spring	Total Year % Gain
Social-Emotional	32	38	44	6%
Physical Development	38	47	57	19%
Language/Literacy	15	20	25	20%
Cognitive	17	24	30	13%
Approaches to Learning	44	54	64	20%
English Language (DLL)	16	25	39	23%

Bear River Early Head Start Outcomes Progress 2014-2015 Non-Dual Language Learners



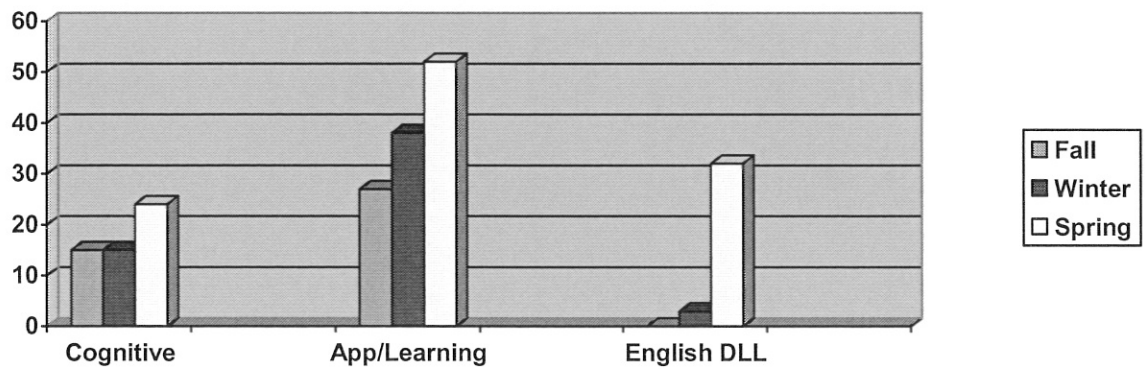
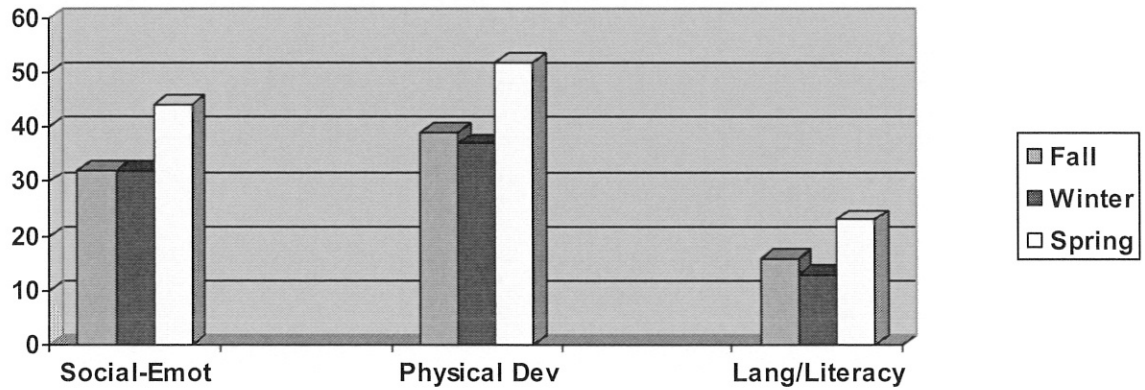
DOMAIN	Fall	Winter	Spring	Total Year % Gain
Social-Emotional	37	42	49	12%
Physical Development	46	51	61	15%
Language/Literacy	22	25	29	7%
Cognitive	25	28	33	8%
Approaches to Learning	57	60	64	7%
English Language (DLL)	n/a	n/a	n/a	n/a

Bear River Early Head Start Outcomes Progress 2014-2015 Box Elder



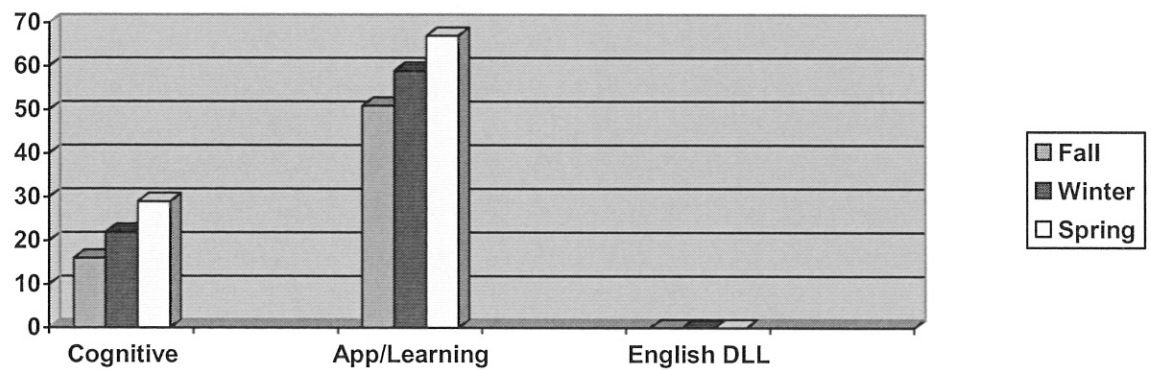
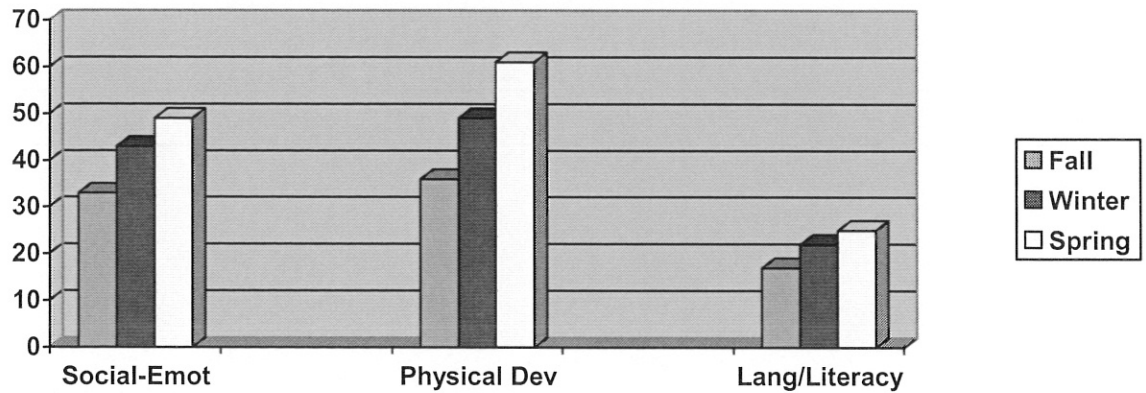
DOMAIN	Fall	Winter	Spring	Total Year % Gain
Social-Emotional	38	48	47	9%
Physical Development	49	55	55	6%
Language/Literacy	24	30	30	6%
Cognitive	28	36	34	6%
Approaches to Learning	60	70	68	8%
English Language (DLL)	0	0	30	30%

Bear River Early Head Start Outcomes Progress 2014-2015 Box Elder North



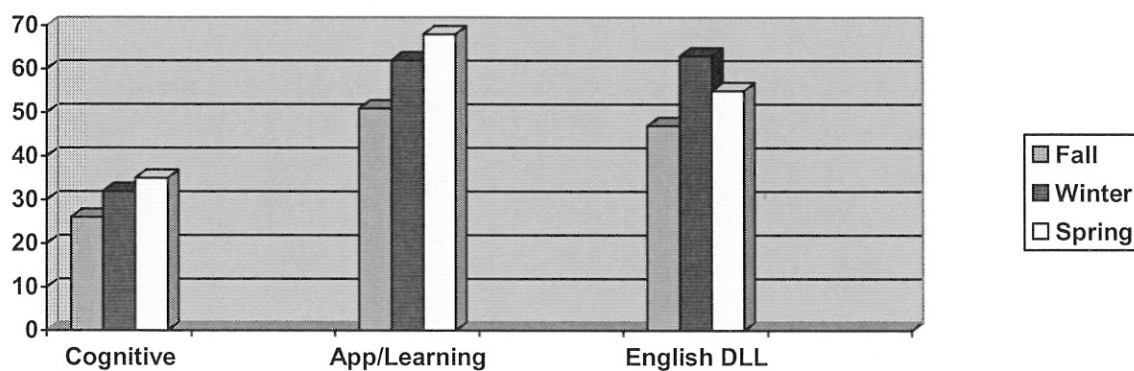
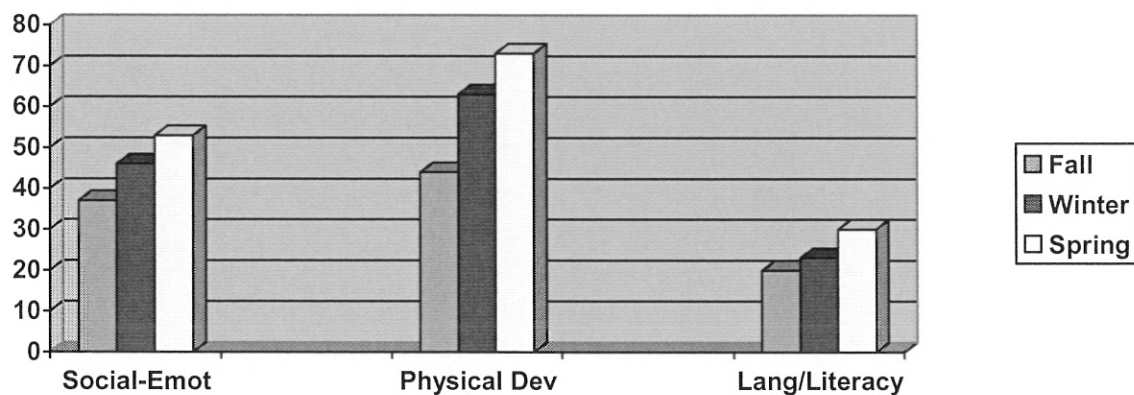
DOMAIN	Fall	Winter	Spring	Total Year % Gain
Social-Emotional	32	32	44	12%
Physical Development	39	37	52	13%
Language/Literacy	16	13	23	7%
Cognitive	15	15	32	17%
Approaches to Learning	27	38	52	25%
English Language (DLL)	0	3	24	24%

Bear River Early Head Start Outcomes Progress 2014-2015 Cache 1



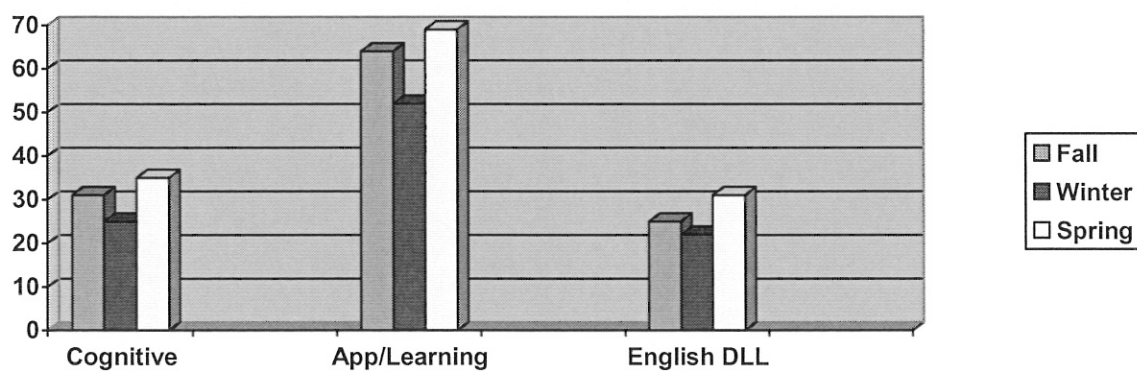
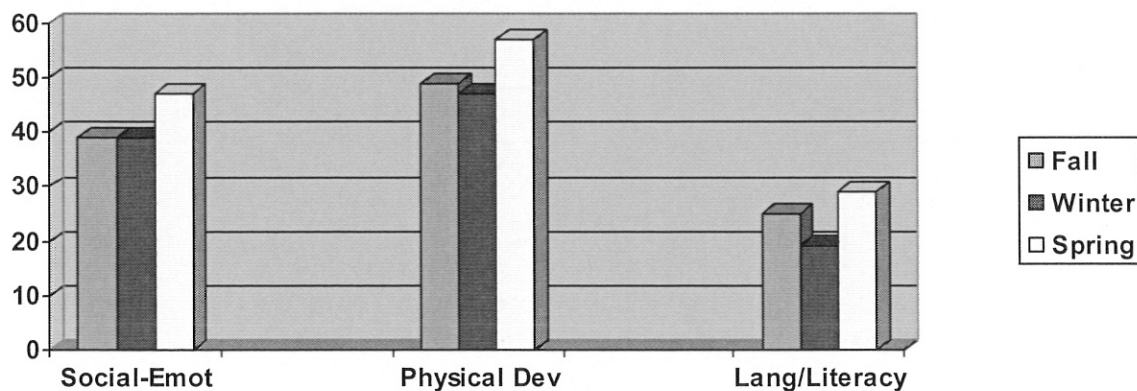
DOMAIN	Fall	Winter	Spring	Total Year % Gain
Social-Emotional	33	43	49	16%
Physical Development	36	49	61	25%
Language/Literacy	17	22	25	8%
Cognitive	16	22	29	13%
Approaches to Learning	51	59	67	16%
English Language (DLL)	0	0	0	0

Bear River Early Head Start Outcomes Progress 2014-2015 Cache 2



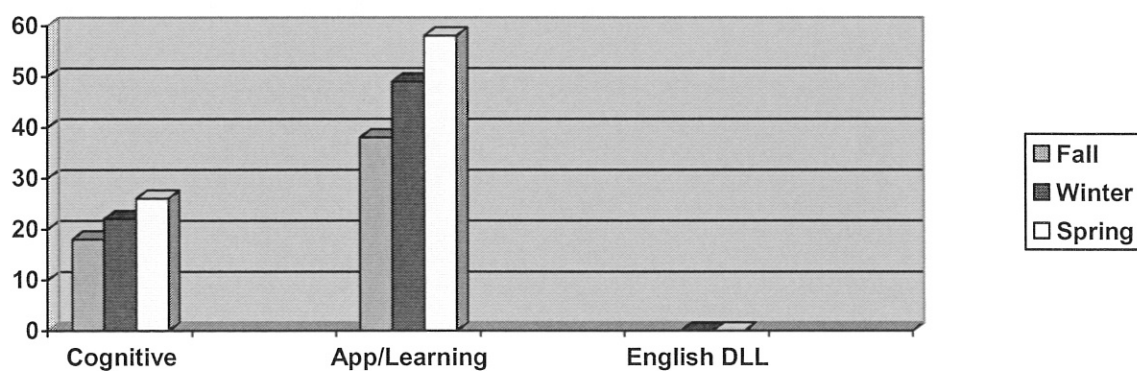
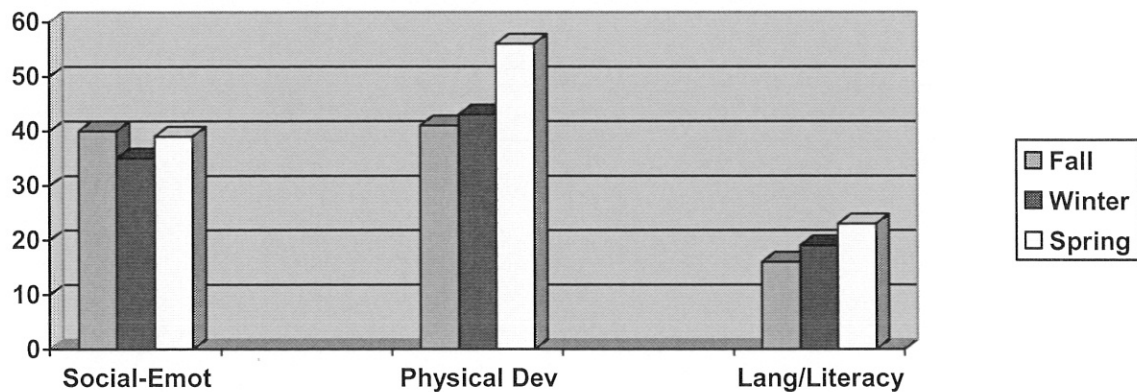
DOMAIN	Fall	Winter	Spring	Total Year % Gain
Social-Emotional	37	46	53	16%
Physical Development	44	63	73	29%
Language/Literacy	20	23	30	10%
Cognitive	26	32	35	9%
Approaches to Learning	51	62	68	17%
English Language (DLL)	47	63	55	8%

Bear River Early Head Start Outcomes Progress 2014-2015 Cache 4



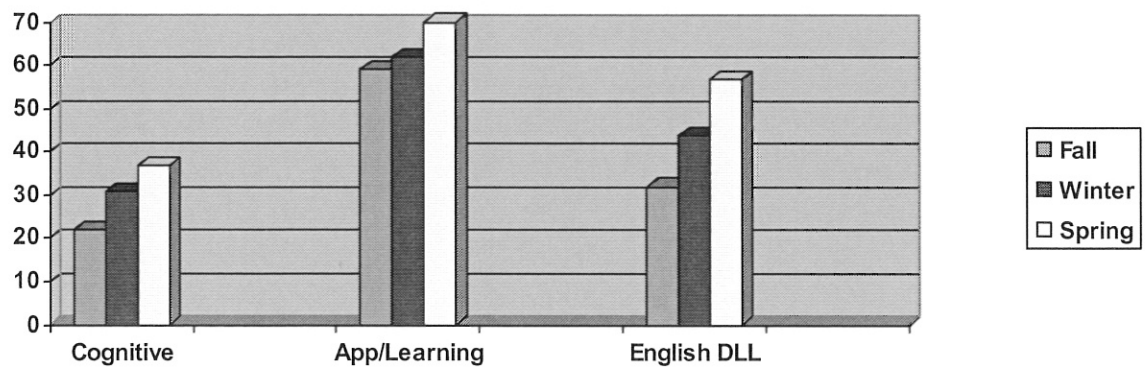
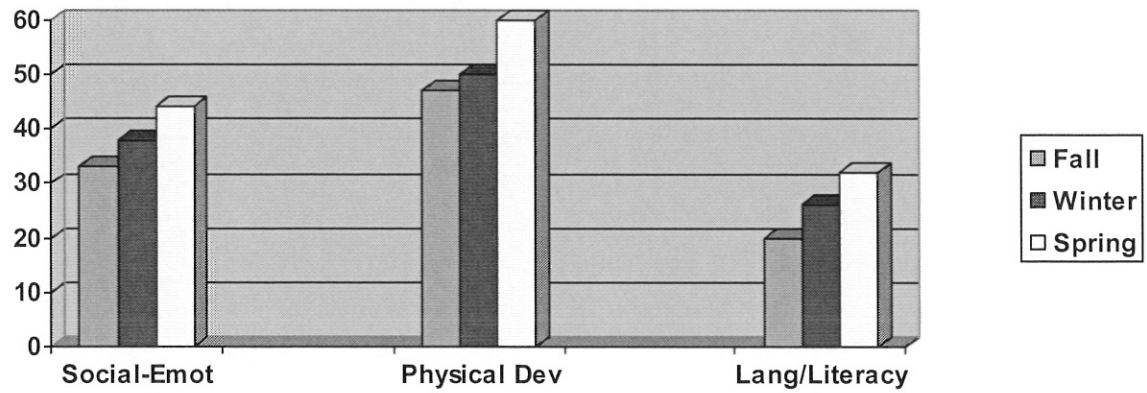
DOMAIN	Fall	Winter	Spring	Total Year % Gain
Social-Emotional	39	39	47	8%
Physical Development	49	47	57	8%
Language/Literacy	25	19	29	4%
Cognitive	31	25	35	4%
Approaches to Learning	64	52	69	5%
English Language (DLL)	25	22	31	6%

Bear River Early Head Start Outcomes Progress 2014-2015 Cache 5



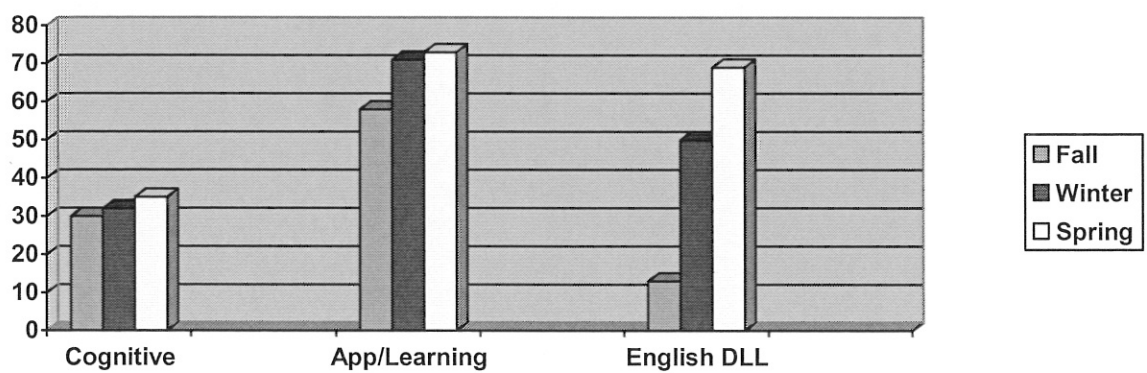
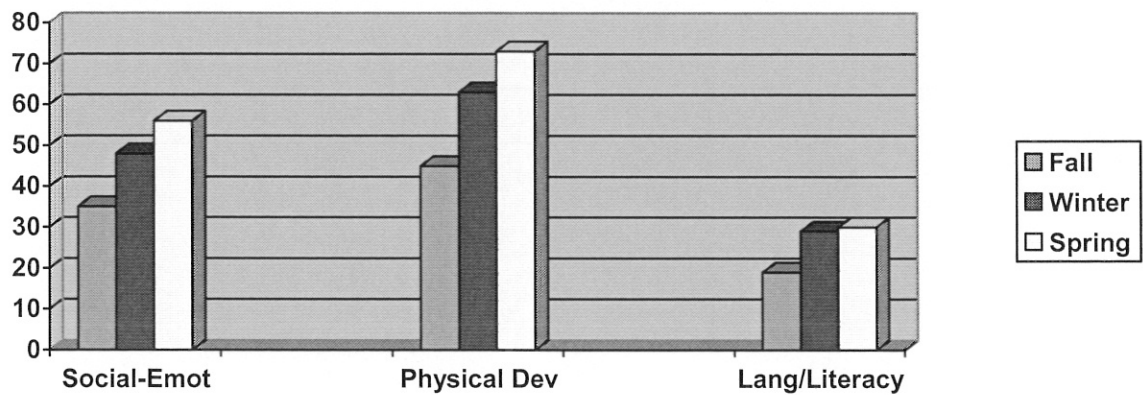
DOMAIN	Fall	Winter	Spring	Total Year % Gain
Social-Emotional	40	35	39	-1%
Physical Development	41	43	56	15%
Language/Literacy	16	19	23	7%
Cognitive	18	22	26	8%
Approaches to Learning	33	49	58	25%
English Language (DLL)	n/a	n/a	n/a	n/a

Bear River Early Head Start Outcomes Progress 2014-2015 Franklin



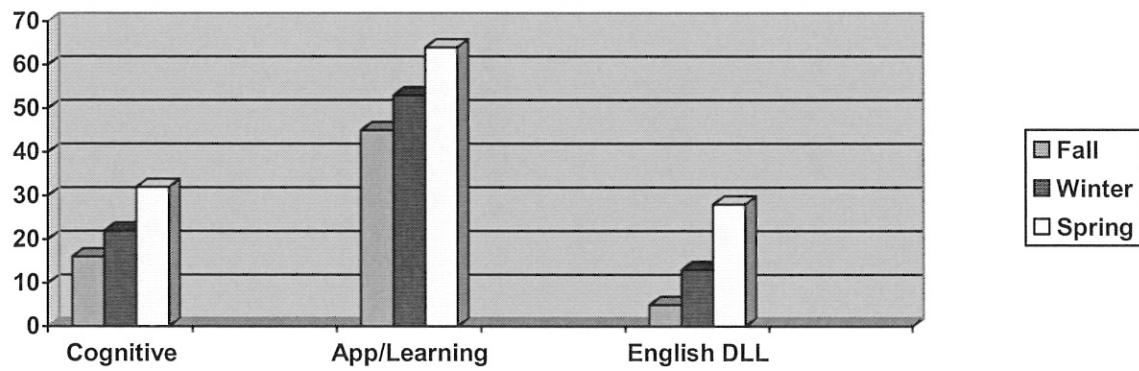
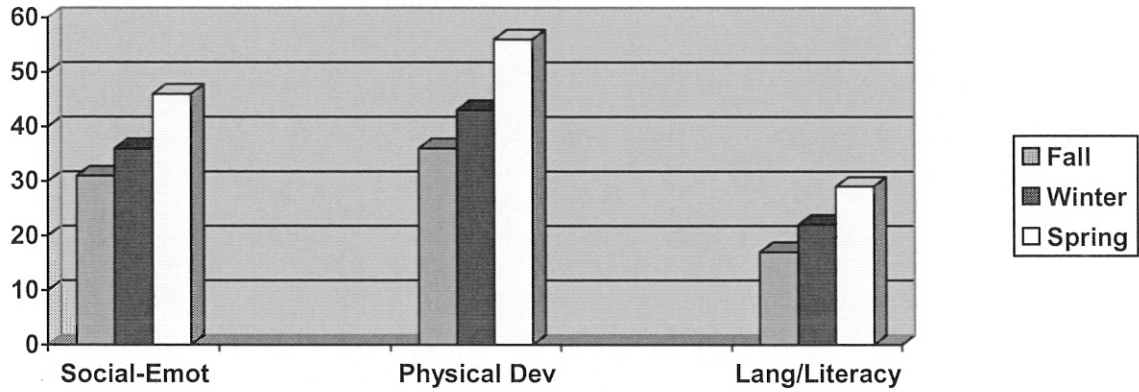
DOMAIN	Fall	Winter	Spring	Total Year % Gain
Social-Emotional	33	38	44	11%
Physical Development	47	50	60	13%
Language/Literacy	20	26	32	12%
Cognitive	22	31	37	15%
Approaches to Learning	59	62	70	11%
English Language (DLL)	32	44	57	25%

Bear River Early Head Start Outcomes Progress 2014-2015 Idaho



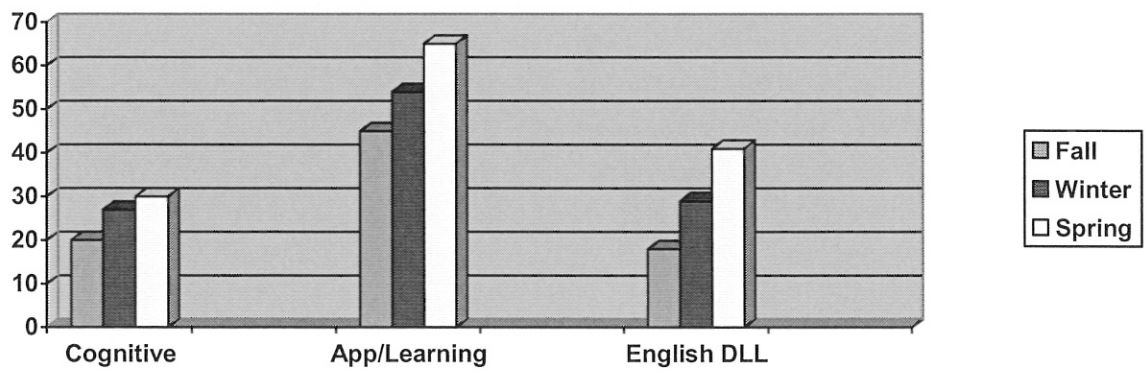
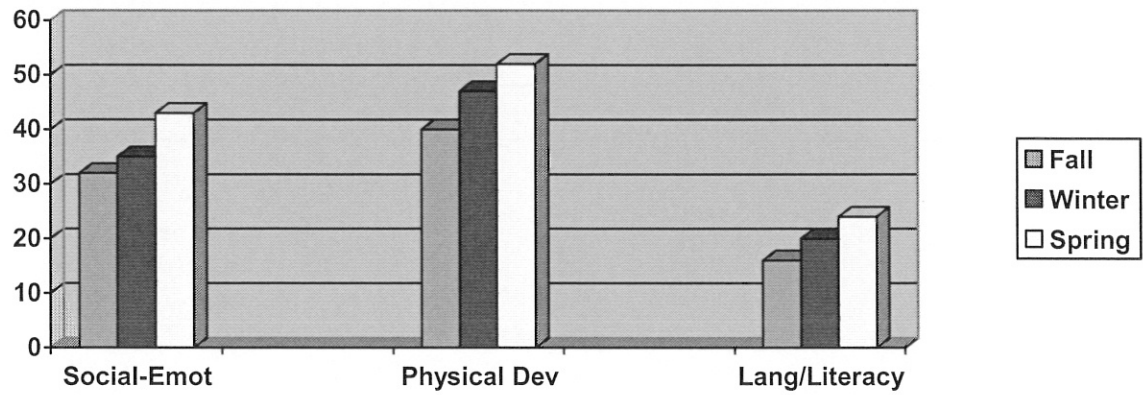
DOMAIN	Fall	Winter	Spring	Total Year % Gain
Social-Emotional	35	48	56	21%
Physical Development	45	63	73	28%
Language/Literacy	19	29	30	11%
Cognitive	30	32	35	5%
Approaches to Learning	58	71	73	15%
English Language (DLL)	13	50	69	56%

Bear River Early Head Start Outcomes Progress 2014-2015 Spanish 1



DOMAIN	Fall	Winter	Spring	Total Year % Gain
Social-Emotional	31	36	46	15%
Physical Development	36	43	56	20%
Language/Literacy	17	22	29	12%
Cognitive	16	22	32	16%
Approaches to Learning	45	53	64	19%
English Language (DLL)	5	13	28	23%

Bear River Early Head Start Outcomes Progress 2014-2015 Spanish 2



DOMAIN	Fall	Winter	Spring	Total Year % Gain
Social-Emotional	32	35	43	11%
Physical Development	40	47	52	12%
Language/Literacy	16	20	24	8%
Cognitive	20	27	30	10%
Approaches to Learning	45	54	65	20%
English Language (DLL)	18	29	41	23%